



FINOMIX[®]

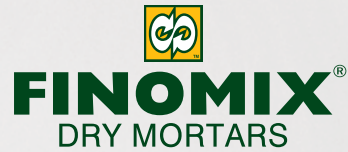
DRY MORTARS

2019 PRODUCT CATALOGUE



building trusting relationships





building trusting relationships

FINOBETON S.A. was founded in 1985, with the upmost vision to meet the needs of the construction industry for quality and reliable solutions in the fields of ready-mixed concrete, floor screeds, asphalt and quarry products. Its commitment for constant growth and innovation, combined with the know-how, the dedication to the excellent quality of the final product, and the high level of services offered, have substantially contributed to the expansion of the company's operations to other sectors (dry mortars, cutting and processing of natural and artificial stone, non-hazardous ECDW processing).

FINOMIX product line was launched in 2008, as the company put into full operation a new dry mortars plant in its facilities in Chordaki, Chania. The motivating power which led to the creation of **FINOMIX** dry mortars was and still remains the intention of the development of innovative products, that are human and environmentally friendly, by means of serious scientific research.

FINOMIX products are available in the Greek market and abroad through the distribution centers of the company in Chania, Herakleion (Crete) and Athens, and a dense network of up-to-date associates and points of sale, in order to immediately meet any demand.





Technical support is provided by specialized technical staff in order to provide high quality services not only before but also after sales, as well as, hands-on training on optimal product application and the proper operation of the application machines.

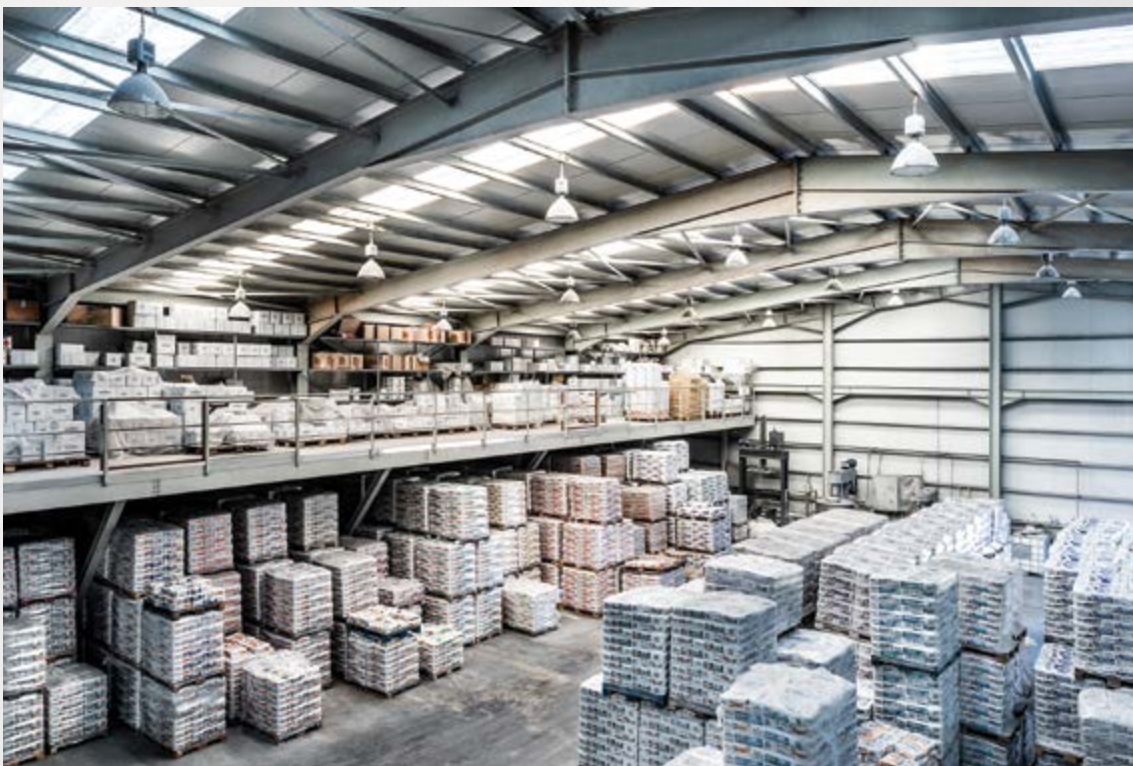
The **FINOMIX** Research and Development Department, staffed by experienced and fully trained scientific personnel, creates modern, high quality and easy-to-use products, which are integrated, reliable and timeless solutions in the field of construction materials. The company participates in collaborative research projects with distinguished universities in Greece and leading research centers that develop structural chemicals in Europe, aiming at the exchange of know-how.





FINOMIX products bear CE certification as provided by Regulation (EU) 305/2011 and the relevant European standards: EN 1504 (mortars for the repair and protection of concrete structures), EN 12004 (tile adhesives), EN 13888 (tile grouts), EN 13813 (floor screeds), ETAG 004 (external thermal insulation systems for facades of buildings), EN 998-1 (rendering and plastering mortars) and EN 998-2 (masonry mortars).

At the same time, a quality assurance system is applied, according to the international standard ISO 9001:2015, for the development, production and distribution of **FINOMIX** products.





FINOMIX[®]

complete building systems



refractory mortars
for fireplaces & stoves

systems for underfloor
heating installations

systems for waterproofing,
tiling & joint sealing
of terraces & balconies

systems for plastering
of internal & external
surfaces

specialized mortars
for building glass blocks

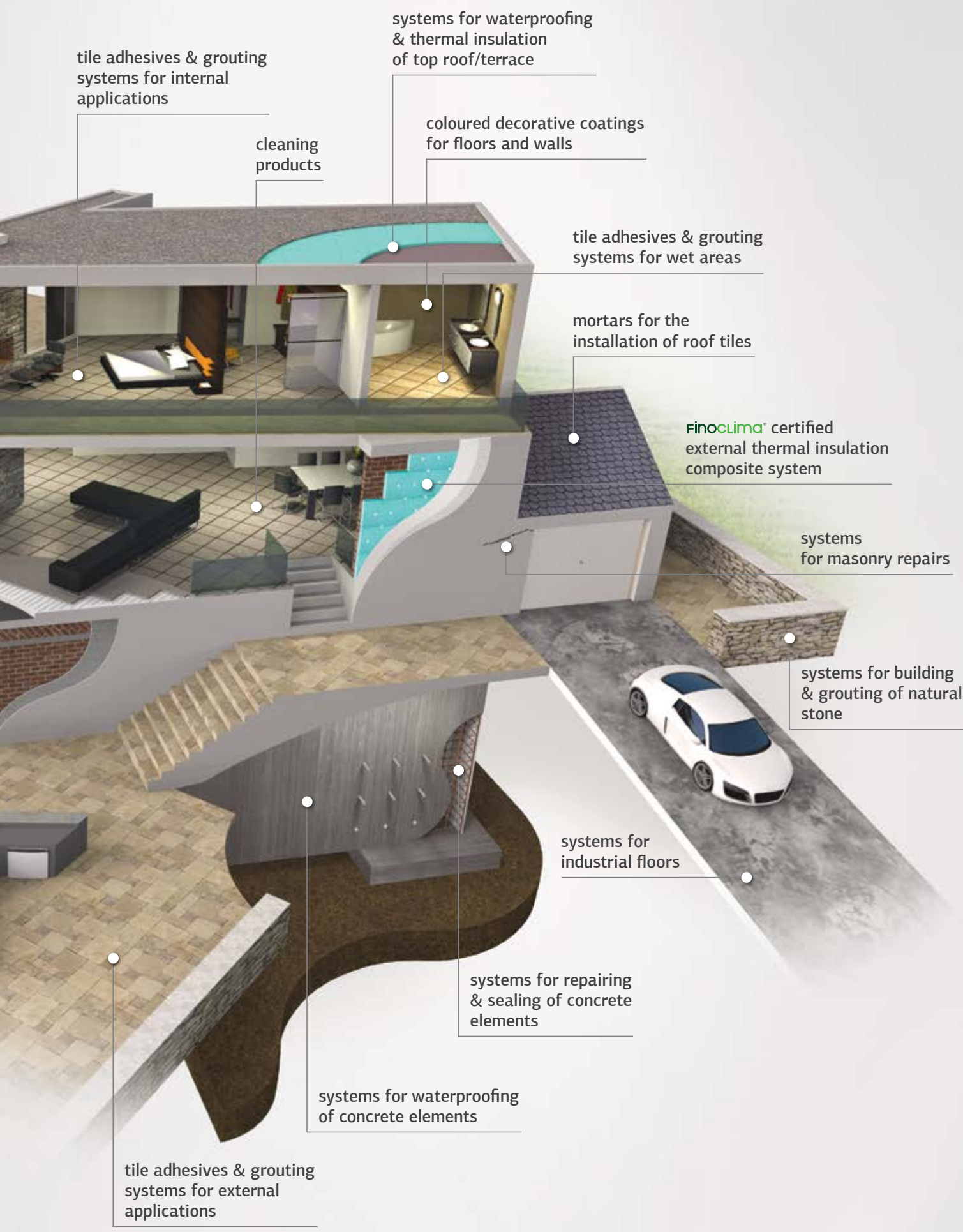
pool lining
systems

specialized mortars
for building aerated
concrete blocks

floor filling
& leveling
systems

coloured
decorative
plasters

masonry
mortars



tile adhesives & grouting systems for internal applications

cleaning products

systems for waterproofing & thermal insulation of top roof/terrace

coloured decorative coatings for floors and walls

tile adhesives & grouting systems for wet areas

mortars for the installation of roof tiles

Finoclima® certified external thermal insulation composite system

systems for masonry repairs

systems for building & grouting of natural stone

systems for industrial floors

systems for repairing & sealing of concrete elements

systems for waterproofing of concrete elements

tile adhesives & grouting systems for external applications

contents



repairing materials 9



waterproofing & sealing materials, putties 13

- waterproofing materials 14
- sealing materials 16
- putties 17
- auxiliary materials 19



tile adhesives & grouts 21

- tile adhesives 26
- special application adhesives 29
- tile grouts 30
- auxiliary materials 31



floor screeds 35



Finoclima® external thermal insulation composite system 39

- Finoclima® system materials 40
- auxiliary materials 42



decorative mortars 45

- water repellent coloured plasters 46
- microcement mortars 46
- adhesion promoting primers 48
- varnishes & impregnation materials 48



building mortars & premixed plasters 51

- building mortars 52
- premixed plasters 53
- plaster primers 55
- auxiliary materials 55



concrete & mortar admixtures 57



cleaners 61

- **Fresh** (for domestic use) 62
- **ProClean** (for professional use) 63

repairing materials





RP 3000

Fast-setting one-coat repairing plaster
polymer-modified - fiber-reinforced



DESCRIPTION

Polymer-modified, fiber-reinforced, cementitious fast-setting and fast-drying mortar, for repairing old and new structures.
Classified as CS II / W1 / A1 type mortar according to European standard EN 998-1.

APPLICATIONS

For repair works to restore plaster segments, as well as any repair on masonry surfaces of building structures.
Ideal for repairing corners (edges) and installing corner beads.
Suitable for interior and exterior use.

PACKAGING	ITEMS/BOX	ITEMS/PAL.
5kg plastic bag	4	144
25kg paper bag		60

CONSUMPTION

Approximately 12-14 kg/m² for a 1cm thick layer.

RP 4000

High strength cement-based repairing mortar - CC R4
polymer-modified - fiber-reinforced



DESCRIPTION

Polymer-modified, fiber-reinforced, repairing cementitious mortar for highly demanding concrete repairs.
Classified as CC R4 type mortar according to European standard EN 1504-03.

APPLICATIONS

Ideal for demanding repairs to reinforced concrete elements.
Application thickness up to 35mm/layer with a trowel or up to 70mm by gunite machine.

PACKAGING	ITEMS/BOX	ITEMS/PAL.
5kg plastic bag	4	144
25kg paper bag		60

CONSUMPTION

Approximately 18-19 kg/m² for a 1cm thick layer.

RP 4000 RAPID

Fast-setting fiber-reinforced high strength repairing mortar



DESCRIPTION

Fast-setting, fiber-reinforced, repairing mortar with fast strength development for highly demanding repairing works.
Classified as CC R3 type mortar according to European standard EN 1504-03.

APPLICATIONS

Ideal for highly demanding quick repairs of concrete elements, anchoring, sealing of holes, forming of gutters, etc.
Application thickness up to 30mm/layer with a trowel.

PACKAGING	ITEMS/BOX	ITEMS/PAL.
5kg plastic bag	4	144
25kg paper bag		60

CONSUMPTION

Approximately 16-17 kg/m² for a 1cm thick layer.

RP 4010•MCI FERRO•PROTECT

Migrating corrosion inhibitor



DESCRIPTION

Water-based solution with very high penetrating ability that inhibits corrosion of steel reinforcement of concrete structures. It penetrates deeply in concrete structures creating a protective coating on the steel reinforcement, thus protecting from corrosion and increasing life span.

APPLICATIONS

It is applied preventively during concrete repair works, as well as for the protection of concrete structures that are exposed at corrosive environments (bridges, tanks, etc.).

PACKAGING	ITEMS/BOX	ITEMS/PAL.
1kg plastic container	14	378
5kg plastic container		112
20kg plastic container		36

CONSUMPTION

Approximately 0.5-1.0 kg/m².

RP 4020 CORROSION PROTECT

Cementitious anticorrosive coating for concrete reinforcement elements - bonding layer



DESCRIPTION

Polymer-modified cementitious mortar for repairing and protecting reinforcement from corrosion.

APPLICATIONS

Used in repair works of reinforced concrete for protecting the corroded reinforcement or as preventive coating for the reinforcement when it is exposed (or will be exposed) to a humid environment. Moreover, as a bonding layer between old and new concrete or other repairing mortar. Applied with brush.

PACKAGING	ITEMS/BOX	ITEMS/PAL.
1kg plastic container	12	192
5kg plastic container		48

CONSUMPTION

- As anticorrosive coating: Approx. 0.07-0.14 kg/m of reinforcement.
- As a bonding layer: Approx. 2 kg/m².

RP 4100

Fiber-reinforced high strength structural repairing mortar - CC R3 polymer-modified



DESCRIPTION

Fiber-reinforced, polymer-modified repairing cementitious mortar for demanding concrete repairs. Classified as CC R3 type mortar according to European standard EN 1504-03.

APPLICATIONS

Ideal for demanding repairs of reinforced concrete elements. Application thickness up to 20mm/layer with a trowel or spraying machine.

PACKAGING	ITEMS/PAL.
25kg paper bag	60

CONSUMPTION

Approximately 16-17 kg/m² for a 1cm thick layer.

WATER•PLUG

Ultra fast-setting cementitious water plugging mortar



DESCRIPTION

Ready-to-use, one-component, ultra fast-setting cementitious mortar for sealing water leaks.

APPLICATIONS

Ideal in the following cases:

- Instant sealing of water leaks under pressure in basements, underground tunnels and all sorts of underground structures.
- Sealing of rigid joints between walls and floors.
- Sealing of cracks and holes.
- Fast repairing works of masonry or concrete prior to the application of cementitious sealing mortars like HYDROSEAL HS 5000.

PACKAGING	ITEMS/BOX	ITEMS/PAL.
5kg plastic bag	4	144
25kg paper bag		60

CONSUMPTION

Approximately 16-17 kg/m² for a 1cm thick layer.

GRP 4250

Castable cementitious
non-shrink grout



DESCRIPTION

Ready-to-use, one-component, non-shrink, cementitious grouting mortar. It fully complies with the requirements of the European standard EN 1504-6.

APPLICATIONS

It is used wherever a high performance non-shrinking grout is necessary:

- Anchoring.
- Repairs in damaged concrete elements (filling cavities and hollows).
- Bases and bedplates of precision machinery.

PACKAGING	ITEMS/PAL.
25kg paper bag	60

CONSUMPTION

Approximately 2,000kg of dry material produce 1m³ of volume.

COLD-PATCH

Cold asphalt patch
& pothole repair



DESCRIPTION

Ready-to-use cold asphalt for repairing small-scale damage to the asphalt pavement.

It exhibits increased elastic properties, excellent adhesion to the substrate without requiring a bonding layer and great resistance to weather stressing.

APPLICATIONS

It is used for repairing potholes and cracks on asphalt or concrete pavements.

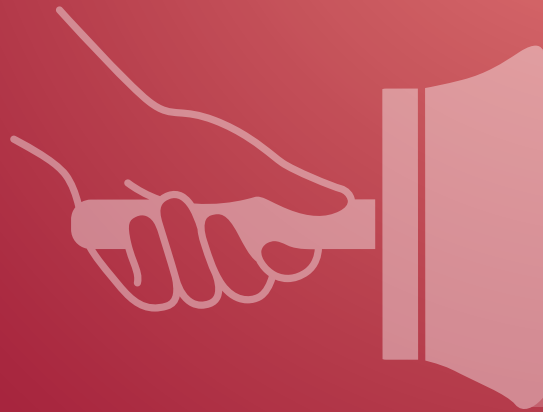
It is also currently used to repair holes created after taking pavement samples to test their quality.

PACKAGING	ITEMS/PAL.
25kg plastic bag	45
25kg plastic container	34

CONSUMPTION

Approximately 20-22 kg/m² for a 2cm thick layer.

waterproofing & sealing materials, putties



- waterproofing materials
- sealing materials
- putties
- auxiliary materials





HYDROSEAL HS 5000

Brushable cementitious sealing mortar



DESCRIPTION

Brushable cementitious sealing mortar.

APPLICATIONS

Used for sealing in cases of simple moisture, water under pressure (up to 7atm) even in cases of low negative pressures. Ideal for waterproofing basements, tanks, swimming pools, septic tanks, concrete, masonry, plaster, etc.

PACKAGING	ITEMS/BOX	ITEMS/PAL.
5kg plastic bag WHITE	4	144
25kg paper bag WHITE		60
5kg plastic bag GREY	4	144
25kg paper bag GREY		60

CONSUMPTION

Approximately 1.0-1.5 kg/m² for a 1mm thick layer.

HYDROSEAL ELASTIC

Flexible 2-component brushable sealing mortar



DESCRIPTION

Elastic, brushable, two-component, sealing mortar. Component A consists of a cementitious mortar and component B is a synthetic resin emulsion. When you mix component A into component B, after setting, an elastic waterproof membrane is created, without joints, capable of withstanding contractions-expansions and small vibrations, as well as sealing cracks.

APPLICATIONS

Applied for waterproofing concrete and plaster surfaces, structural materials such as bricks, cement blocks, concrete blocks, etc., as well as cement fiberboards, metal surfaces, etc. Ideal for waterproofing in case of water under pressure (up to 7atm), negative pressure and where small cracks due to vibrations or strong contractions-expansions already exist or may appear (balconies, terraces, inverted roofs, cisterns, swimming pools, etc.).

PACKAGING	ITEMS/PAL.
7kg (A+B) WHITE	48 (A+B)
35kg (A+B) WHITE	60(A) 60(B)
35kg (A+B) GREY	60(A) 60(B)

CONSUMPTION

Approximately 1.0-1.5 kg/m² for a 1mm thick layer.

HYDRO-PRIMER

Primer for the acrylic brushable elastomeric waterproofing roof coating



DESCRIPTION

Aqueous dispersion of acrylic polymers which, when applied to porous substrates, creates the appropriate conditions for the adhesion of the brushable elastomeric waterproofing HYDROFLEX•ACRYL.

APPLICATIONS

Ready-to-use primer that penetrates deep into the substrate, decreasing its absorbency and increasing its cohesion. It also operates as a binding layer between the substrate and the elastomeric waterproofing HYDROFLEX•ACRYL. Applied on surfaces such as concrete, plaster, gypsum fiberboards, cement fiberboards, etc.

PACKAGING	ITEMS/PAL.
5kg plastic container	96
20kg plastic container	24

CONSUMPTION

Approximately 0.1-0.2 kg/m² depending on the surface's absorbency.

HYDROFLEX ACRYL

Acrylic brushable elastomeric roof coating



DESCRIPTION

Brushable elastomeric roof coating, based on acrylic polymers. After it is applied, it forms an elastic membrane without joints. Contains no organic solvents.

APPLICATIONS

Used for waterproofing roofs, balconies, as well as difficult points such as corners, edges, joints between different materials or for sealing cracks in roofs.

PACKAGING	ITEMS/BOX	ITEMS/PAL.
1kg plastic container	9	324
5kg plastic container		105
15kg plastic container		44

CONSUMPTION

Approximately 1.0-1.5 kg/m² in two layers, depending on the substrate's type.

HYDROFLEX HYBRID PU

Hybrid-polyurethane elastomeric waterproofing roof coating



DESCRIPTION

Hybrid elastomeric coating composed out of special polyurethane and acrylic polymers. Fast curing, forming a totally watertight, highly elastomeric membrane without seams or joints, resistant to UV radiation and other environmental corrosive agents.

APPLICATIONS

Ideal for the waterproofing of terraces, balconies, as well as difficult areas like corners, edges and joints between adjacent different materials. Also suitable for local sealing of cracks on flat roofs. It exhibits high solar reflectance which makes it capable to be applied as cool roof coating.

PACKAGING	ITEMS/BOX	ITEMS/PAL.
1kg plastic container	9	324
5kg plastic container		105
15kg plastic container		44

CONSUMPTION

- Approximately 1.5-2.0 kg/m² applied in two layers, depending on the method of application and the roughness of the substrate.
- Approximately 2.5 kg/m² applied in three layers, reinforced with polyester fleece.

EPOXY-PRIMER

Water-based epoxy primer for non-absorbent surfaces



DESCRIPTION

Clear, epoxy based, two-component primer, without solvents. Exhibits high penetrability, increased hardness and resistance to water, acids and alkalis.

APPLICATIONS

Used as primer for the polyurethane sealant HYDROFLEX•PU on non-absorbent surfaces. Applied on surfaces such as aluminium, steel, asphalt, glass, ceramic tiles, old acrylic membranes, etc. Used as primer on concrete surfaces with increased residual moisture.

PACKAGING

4kg (A+B)

20kg (A+B)

CONSUMPTION

Approximately 0.1-0.2 kg/m² in one or two layers.

PU-PRIMER

Polyurethane primer for absorbent surfaces



DESCRIPTION

Clear, one-component, solvent-based polyurethane primer which, when applied to porous substrates, creates the appropriate conditions for the adhesion of the brushable polyurethane sealant HYDROFLEX•PU.

APPLICATIONS

Ready-to-use primer that penetrates deep into the substrate, decreasing its absorbency and increasing its cohesion. It also acts as a binding layer between the substrate and the polyurethane sealant HYDROFLEX•PU. Applied on surfaces such as concrete, plaster, wood, etc.

PACKAGING	ITEMS/PAL.
5kg metal container	120
17kg metal container	33

CONSUMPTION

Approximately 0.20-0.25 kg/m² in one layer.

HYDROFLEX•PU

Elastic polyurethane waterproofing membrane



DESCRIPTION

Polyurethane, brushable, one-component roof sealant. After it is applied, it forms an elastic membrane without joints, with high elasticity and resistance to stagnant water.

APPLICATIONS

Ideal for sealing of roofs, balconies, as well as difficult points such as corners, edges, joints between different materials or sealing cracks in roofs.

PACKAGING	ITEMS/PAL.
6kg metal container	120
25kg metal container	33

CONSUMPTION

Approximately 1.5-2.0 kg/m² in two or three layers.

PU•SOLVENT

Thinner for polyurethane sealing membranes



DESCRIPTION

Thinner for the polyurethane, brushable, sealing membrane HYDROFLEX•PU and the polyurethane PU varnishes DECODUR COAT•PU 2K GLOSS and DECODUR COAT•PU 2K MAT.

APPLICATIONS

It is added in polyurethane-based materials in order to facilitate its application by roller, brush or airless spraying. Also suitable for the cleaning of tools after application.

PACKAGING	ITEMS/BOX
1lt metal container	8
5lt metal container	

CONSUMPTION

- Approximately 5-15% b.w. dilution of HYDROFLEX•PU for application by roller or brush.
- Approximately 5-10% b.w. dilution of HYDROFLEX•PU for application by spraying.

DP•5350

Water repellent impregnation against capillary rising damp



DESCRIPTION

Ready-to-use, water-based, silicate emulsion for the protection against capillary rising damp. It doesn't corrode the steel reinforcement of concrete.

APPLICATIONS

It is used mainly against the capillary raising damp on masonry or concrete structures, creating a horizontal, water repellent barrier. In case of hydrostatic pressure, it is necessary to apply an additional layer of HYDROSEAL HS 5000.

PACKAGING	ITEMS/PAL.
5kg plastic container	112
20kg plastic container	36

CONSUMPTION

It depends on the absorptivity of the substrate. Indicatively: for a normal absorbing masonry it is required approximately 15-16 kg/m² in cross section.

sealing materials



FIX PRIMER•PU

One-component polyurethane primer



DESCRIPTION

One-component, polyurethane primer to promote adhesion of elastomeric sealants or adhesives (PU•FIX) on porous substrates.

APPLICATIONS

It is used on substrates like concrete, light-weight concrete, masonry, natural stones, wood, etc., in order to promote the adhesion of elastomeric sealants or adhesives on them (PU•FIX).

PACKAGING	ITEMS/BOX
0.5kg metal container	12

CONSUMPTION

Indicatively: 1kg of primer is enough for approximately 60m of joint.

PU•FIX

Elastomeric thixotropic polyurethane sealant



DESCRIPTION

Elastomeric, one-component, polyurethane sealant, with increased thixotropic behaviour. Available in white and grey.

APPLICATIONS

Used as sealant and adhesive of vertical and horizontal joints between similar and dissimilar materials in construction and technical works, prefab, naval and industrial applications, in indoor and outdoor areas. Exhibits strong adhesion on all construction materials such as concrete, ceramics, glass, wood, metal plate, aluminium, steel, etc.

PACKAGING	ITEMS/BOX
600ml roll	15

CONSUMPTION

Indicatively:

- For 10x10mm joints: 310ml / 3m of joint.
- For 5x5mm joint: 310ml / 12m of joint.

putties



FOAM•PUTTY

Acrylic foam-putty for quick patching of cracks & holes



DESCRIPTION

Light-weight, ready-to-use, acrylic putty for repairs of cracks and holes. It doesn't shrink and is ready to be painted after 30-40 minutes.

APPLICATIONS

Used for the repair of cracks and holes on porous substrates like plaster, gypsum boards, wood, etc. It can be applied up to 4-5cm thick without shrinking or cracking. Suitable for interior and exterior use.

PACKAGING	ITEMS/BOX	ITEMS/PAL.
0,25lt plastic container	24	384
1lt plastic container	12	192
4lt plastic container		48

CONSUMPTION

It depends on the application.

SPATULA•FINE

Extra-fine graded cementitious wall leveling compound polymer-modified



DESCRIPTION

Polymer-modified, cementitious mortar, ideally used as skim coat for leveling plastered/rendered or treated with coarse-graded spatula, surfaces. Classified as CS II, W0 general purpose rendering mortar according to European standard EN 998-1.

APPLICATIONS

Suitable for the skimming of surface to be painted. Applied on renders/plasters, cement and gypsum boards. Can be used for the repair of minor hairline-cracks on renders. Suitable for indoors and outdoors.

PACKAGING	ITEMS/PAL.
20kg paper bag	60

CONSUMPTION

1.0-1.2 kg/m², depending on the irregularities of the surface.

SPATULA COARSE

Coarse-graded cementitious wall leveling compound polymer-modified



DESCRIPTION

Polymer-modified, cementitious mortar, ideally used as skim coat for leveling plastered/rendered surfaces. Classified as CS III, W1 general purpose rendering mortar according to European standard EN 998-1.

APPLICATIONS

Suitable for the skimming of surface to be painted. Applied on renders/plasters, cement and gypsum boards. Can be used for the repair of minor hairline-cracks on renders. Suitable for indoors and outdoors.

PACKAGING	ITEMS/PAL.
25kg paper bag	60

CONSUMPTION

1.0-1.5 kg/m², depending on the irregularities of the surface.

SC 01

Polymer-modified spatula putty
extra-fine graded - white



DESCRIPTION

Extra fine-graded, polymer-modified, cementitious mortar for smoothing surfaces to be painted. Classified as CS II / W0 / A1 type mortar according to European standard EN 998-1.

APPLICATIONS

Used for leveling and preparing surfaces to be painted, in cases where a perfectly smooth surface is required.

Suitable for interior and exterior applications, on plaster, gypsum or cement fiberboards and cement, instead of oil putties and similar materials.

PACKAGING	ITEMS/BOX	ITEMS/PAL.
4kg plastic bag	4	144
20kg paper bag		60

CONSUMPTION

Approximately 1.1 kg/m² for a 1mm thick layer.

SC 02

Polymer-modified leveling spatula putty
white



DESCRIPTION

Polymer-modified, cementitious mortar for smoothing and covering defects on surfaces to be painted. Classified as CS II / W1 / A1 type mortar according to European standard EN 998-1.

APPLICATIONS

Used for leveling and preparing surfaces to be painted and for repairing small cracks.

Suitable for interior and exterior applications.

PACKAGING	ITEMS/BOX	ITEMS/PAL.
5kg plastic bag	4	144
25kg paper bag		60

CONSUMPTION

Approximately 1.4-1.5 kg/m² for a 1mm thick layer.

SC 03

Polymer-modified repairing cement putty
extra-fine graded



DESCRIPTION

Extra fine-graded, polymer-modified, cementitious mortar for smoothing surfaces to be painted. Classified as CS IV / W1 / A1 type mortar according to European standard EN 998-1. Produced in white and grey.

APPLICATIONS

Used for the aesthetic repair of fair-faced concrete elements and the protection of reinforcement against corrosion by acting as a barrier to the penetration of moisture through the pores and imperfections that may exist.

Suitable for interior and exterior use.

PACKAGING	ITEMS/BOX	ITEMS/PAL.
5kg plastic bag	4	144
25kg paper bag		60

CONSUMPTION

Approximately 1.2 kg/m² for a 1mm thick layer.

SC 04

Polymer-modified cement putty
for covering imperfections up to 20mm - white



DESCRIPTION

Polymer-modified, cementitious mortar with increased covering properties, for smoothing surfaces to be painted. Classified as CS III / W0 / A1 type mortar according to European standard EN 998-1.

APPLICATIONS

Suitable for filling and covering any imperfection on plaster, fair-faced concrete, masonry and other surfaces.

Application thickness up to 20mm/layer.

Suitable for interior and exterior use.

PACKAGING	ITEMS/BOX	ITEMS/PAL.
5kg plastic bag	4	144
25kg paper bag		60

CONSUMPTION

Approximately 1.5 kg/m² for a 1mm thick layer.



FIBERGLASS MESH FOR INSULATIONS

DESCRIPTION

Flexible alkali resistant fiberglass mesh 60gr/m², suitable for the reinforcement of flexible cementitious waterproofing layers and acrylic, polyurethane or asphalt based elastomers.

COLOUR	SQUARE OPENING (mm)	WEIGHT	DIMENSIONS
White	2x2	60gr/m ²	1x50m (50m ²)



POLYESTER REINFORCING FABRIC

DESCRIPTION

Polyester fleece for the reinforcement of hybrid, polyurethane or acrylic waterproofing membranes. Weight: 50gr/m².

COLOUR	THICKNESS	WEIGHT	DIMENSIONS
White	0.6mm	50gr/m ²	1x50m (50m ²)



DIMPLED MEMBRANE (HDPE)

DESCRIPTION

Dimpled membrane of high-density polyethylene (HDPE) for drainage and protection around basements. Weight: 400gr/m².

DIMPLE HEIGHT	WEIGHT	DIMENSIONS
8mm	400gr/m ²	2x20m (40m ²)



POLYESTER NON-WOVEN FABRIC

DESCRIPTION

Polyester, non-woven fabric with excellent mechanical and hydraulic characteristics. Used as filter, reinforcement or separating layer in infrastructures, draining, anti-corrosion, building and railway projects. Weight: 120gr/m².

WEIGHT	DIMENSIONS
120gr/m ²	2x100m (200m ²)



tile adhesives & grouts



- tile adhesives
- special application adhesives
- grouts
- auxiliary materials



europaean standards guide

EUROPEAN STANDARD EN 12004 TILE ADHESIVES				
ADHESIVE TYPE	SYMBOL GUIDE	PROPERTY	CHECK METHOD	MINIMUM REQUIREMENTS
C1	CEMENTITIOUS TILE ADHESIVE	adhesion strength	EN 1348 after 28 days under normal conditions (23°C, 50±5% RH, U _{air} ≤0.2m/s)	≥ 0,5 N/mm ²
			EN 1348 after thermal ageing at 70°C for 14 days	≥ 0,5 N/mm ²
			EN 1348 after water immersion for 21 days	≥ 0,5 N/mm ²
			EN 1348 after 25 freeze-thaw cycles	≥ 0,5 N/mm ²
		open time	EN 1346	≥ 20 min
C2	ENHANCED CEMENTITIOUS TILE ADHESIVE	adhesion strength	EN 1348 after 28 days under normal conditions (23°C, 50±5% RH, U _{air} ≤0.2m/s)	≥ 1,0 N/mm ²
			EN 1348 after thermal ageing at 70°C for 14 days	≥ 1,0 N/mm ²
			EN 1348 after water immersion for 21 days	≥ 1,0 N/mm ²
			EN 1348 after 25 freeze-thaw cycles	≥ 1,0 N/mm ²
		open time	EN 1346	≥ 20 min
D1	DISPERSION ADHESIVE BASED ON LIQUID POLYMERS	adhesion strength	EN 1348 after 28 days under normal conditions (23°C, 50±5% RH, U _{air} ≤0.2m/s)	≥ 1,0 N/mm ²
		shear strength	EN 1324 after thermal ageing at 70°C for 14 days	≥ 1,0 N/mm ²
			EN 1324 after water immersion for 14 days	-
			EN 1324 after stress to high temperatures	-
		open time	EN 1346	≥ 20 min
D2	ENHANCED DISPERSION ADHESIVE BASED ON LIQUID POLYMERS	adhesion strength	EN 1348 after 28 days under normal conditions (23°C, 50±5% RH, U _{air} ≤0.2m/s)	≥ 1,0 N/mm ²
		shear strength	EN 1324 after thermal ageing at 70°C for 14 days	≥ 1,0 N/mm ²
			EN 1324 after water immersion for 14 days	≥ 0,5 N/mm ²
			EN 1324 after stress to high temperatures	≥ 1,0 N/mm ²
		open time	EN 1346	≥ 20 min
R1	REACTIVE RESINS ADHESIVE	adhesion strength	EN 1348 after 28 days under normal conditions (23°C, 50±5% RH, U _{air} ≤0.2m/s)	≥ 2,0 N/mm ²
		shear strength	EN 12003 after water immersion for 14 days	≥ 2,0 N/mm ²
			EN 12003 after thermal shock	-
		open time	EN 1346	≥ 20 min
R2	ENHANCED REACTIVE RESINS ADHESIVE	adhesion strength	EN 1348 after 28 days under normal conditions (23°C, 50±5% RH, U _{air} ≤0.2m/s)	≥ 2,0 N/mm ²
		shear strength	EN 12003 after water immersion for 14 days	≥ 2,0 N/mm ²
			EN 12003 after thermal shock	≥ 2,0 N/mm ²
				open time

ADDITIONAL CHARACTERISTICS				
ADHESIVE TYPE	SYMBOL GUIDE	PROPERTY	CHECK METHOD	MINIMUM REQUIREMENTS
T	THIXOTROPIC ADHESIVE (ZERO VERTICAL SLIP)	vertical slip	EN 1308	≤ 0.5 mm
E	ADHESIVE WITH PROLONGED OPEN TIME	open time	EN 1346	≥ 30 min
F	FAST-SETTING ADHESIVE	open time	EN 1346	≥ 10 min
		adhesion strength after 24 hours	EN 1348	≥ 0.5 N/mm ²

EUROPEAN STANDARD EN 12002 ELASTIC TILE ADHESIVES				
ADHESIVE TYPE	SYMBOL GUIDE	PROPERTY	CHECK METHOD	MINIMUM REQUIREMENTS
S1	ELASTIC ADHESIVE	lateral deformability S	EN 12002	2.5 mm ≤ S < 5 mm
S2	HIGHLY ELASTIC ADHESIVE			S ≥ 5 mm

FINOMIX[®] adhesive tiles comformity with european standards

ADHESIVE NAME	CLASS	DESCRIPTION
KP 80W	C1	Cementitious tile adhesive for absorbent tiles and common substrates. for interior and exterior use
KP 100W	C1 T	Cementitious tile adhesive with zero vertical slip, for absorbent tiles and common substrates. for interior and exterior use
KP 200W	C2 T	Enhanced cementitious tile adhesive with zero vertical slip, for non absorbent tiles and common substrates. for interior and exterior use
KP 220W	C2 E	Enhanced cementitious tile adhesive with extended open time of adhesion, for non absorbent tiles and common substrates. for interior and exterior use
KP 250W	C2 TE	Enhanced cementitious tile adhesive with zero vertical slip and extended open time of adhesion, for non absorbent tiles and common substrates. for interior and exterior use
KP 300W	C2 TE S1	Enhanced cementitious tile adhesive with zero vertical slip and extended open time of adhesion, for non absorbent tiles. elastic - for interior and exterior use
KP 400W	C2 TE	Enhanced cementitious tile adhesive with zero vertical slip and extended open time of adhesion, for non absorbent tiles and common substrates. for interior and exterior use
KP 450	C2 FT	Fast-setting, enhanced cementitious tile adhesive with zero vertical slip, for non absorbent tiles and common substrates. for interior and exterior use
KP 500W	C2 TE S1	Enhanced cementitious tile adhesive with zero vertical slip and extended open time of adhesion, for non absorbent tiles. elastic - for interior and exterior use
KP 600	C2 TE S2	Enhanced cementitious tile adhesive with zero vertical slip and extended open time of adhesion, for non absorbent tiles. highly elastic - for interior and exterior use

table of applications for FINOMIX® tile

ADHESIVE NAME	KP 80W	KP 100W	KP 200W	KP 220W	KP 250W
ADHESIVE TYPE	C1	C1 T	C2 T	C2 E	C2 TE
BUILDING MATERIAL					
ceramic tiles (absorbent)					
granite tiles					
large dimension tiles			▲	▲	
marble					
natural stone					
artificial stone					
ceramic mosaics					
glass mosaics					▲
AAC blocks					
glass blocks					
fire bricks					
insulating boards (EPS / XPS / stonewool board)					
INTERIOR FLOOR					
cement screeds					
lightweight concrete	●	●	●	●	●
mosaic					
old tile layings				▲	▲
underfloor heating					▲
wood					
metal					
INTERIOR WALL					
cement-based plasters					
gypsum plasters	●	●	●	●	●
cement board			● ▲	● ▲	● ▲
gypsum board			● ▲	● ▲	● ▲
AAC blocks	●	●	●		●
BATHROOM					
cement screeds					
plaster					
gypsum board			● ▲	● ▲	● ▲
BALCONY - TERRACE					
cementitious surface			▲	▲	
lightweight concrete			● ▲	● ▲	● ▲
FACADES					
plaster			▲	▲	
cement board					● ▲
AAC blocks			● ▲	● ▲	●
SWIMMING POOL					
cementitious surface					

Recommended application



Alternative application



adhesives & special application adhesives

KP 300W	KP 400W	KP 450	KP 500W	KP 600	PORO 510	GL 520	KF 530	FC 1100
C2 TE S1	C2 TE	C2 FT	C2 TE S1	C2 TE S2				
Green	Green	Green	Green	Green				
Green	Green	Green	Green	Green				
Green	Green	White	Green	Green				
Green	Green	White	Green	Green				
Green	Green	White	Green	Green				
Green	Green	White	Green	Green				
Green	Yellow ▲	White	Green	Green				
White					Green			
White						Green		
White							Green	
White								Green
Green								
Green								
Green	Green ●	Green ●	Green	Green				
Green	Green ●	Green ●	Green	Green				
Green	Yellow ▲	Yellow ▲	Green	Green				
Green	Green ▲	Green ▲	Green	Green				
Yellow ● ▲	Yellow ● ▲	Yellow ● ▲	Green ●	Green ●				
Green ▲			Green ▲	Green				
Green								
Green ●	Green ●	Green ●	Green ●	Green ●				
Green ●	Green ●	Green ●	Green ●	Green ●				
Green ●	Green ●	Green ●	Green ●	Green ●				
Green ●	Green ●	Green ●	Green ●	Green ●				
Green								
Green ●	Green ●	Green ●	Green ●	Green ●				
Green ●	Green ●	Green ●	Green ●	Green ●				
Green	Green ▲	Green ▲	Green	Green				

Enhancement with FINOFLEX emulsion according to the instructions ▲

Substrate preparation with ACRYLIC PRIMER or FINO•CONTACT ●



KP 80W STANDARD

Polymer-modified tile adhesive
white



DESCRIPTION

Cementitious, polymer-modified tile adhesive. Classified as **C1 T** type adhesive according to European standard EN 12004.

APPLICATIONS

For laying absorbent tiles (ceramic tiles) and natural stones. Applied to floors and walls in indoor and outdoor areas. Suitable for conventional substrates such as concrete, cement mortars, plaster, concrete blocks, etc. Can also be used for small-scale works and repairs by painters and electricians.

PACKAGING	ITEMS/PAL.
25kg paper bag	60

CONSUMPTION

Approximately 2-4 kg/m².

KP 100W ACRYLIC

Acrylic tile adhesive
white



DESCRIPTION

Cementitious, acrylic tile adhesive with zero vertical slip. Classified as **C1 T** type adhesive according to European standard EN 12004.

APPLICATIONS

For laying absorbent tiles (ceramic tiles) and natural stones. Applied to floors and walls in indoor and outdoor areas. Suitable for conventional substrates such as concrete, cement mortars, plaster, concrete blocks, etc. Can also be used for small-scale works and repairs by painters and electricians.

PACKAGING	ITEMS/BOX	ITEMS/PAL.
5kg plastic bag	4	144
25kg paper bag		60

CONSUMPTION

Approximately 2-4 kg/m².

KP 200W SUPER ACRYLIC

Enhanced acrylic tile adhesive
white



DESCRIPTION

Enhanced, cementitious, acrylic tile adhesive with zero vertical slip. Classified as **C2 T** type adhesive according to European standard EN 12004.

APPLICATIONS

For laying absorbent tiles of all types and dimensions (ceramic tiles, thin marble or stone tiles, etc.) as well as non-absorbent small and medium-sized tiles (cotto, klinker, porcelanato, etc.). Applied to floors and walls in indoor and outdoor areas. Suitable for conventional substrates, such as concrete, cement mortars, plaster, concrete blocks, etc.

PACKAGING	ITEMS/PAL.
25kg paper bag	60

CONSUMPTION

Approximately 2-4 kg/m².

KP 220W EXTRA

Enhanced polymer-modified tile adhesive

prolonged open time of adhesion
white



DESCRIPTION

Enhanced, cementitious, polymer-modified tile adhesive with extended open time of adhesion. Classified as **C2 E** type adhesive according to European standard EN 12004.

APPLICATIONS

For laying absorbent (ceramic) and non-absorbent tiles (granite tiles, gres porcelanato) of all dimensions, decorative natural or artificial stones. Applied to floors and walls in indoor and outdoor areas.

Suitable to be used on conventional substrates such as concrete, cement mortar or plaster, on masonry from brick, cement or concrete blocks, in areas with increased moisture.

PACKAGING	ITEMS/BOX	ITEMS/PAL.
5kg plastic bag	4	144
25kg paper bag		60

CONSUMPTION

Approximately 2-4 kg/m².

KP 250W SPECIAL

Enhanced polymer-modified tile adhesive

for granite tiles and other
non absorbent tiles - white



DESCRIPTION

High-performance, cementitious, polymer-modified tile adhesive with zero vertical slip and extended open time of adhesion.

Classified as **C2 TE** type adhesive according to European standard EN 12004.

APPLICATIONS

For laying absorbent (ceramic) and non-absorbent tiles (granite tiles, gres porcelanato) of all dimensions, decorative natural or artificial stones.

Applied to floors and walls in indoor and outdoor areas. Because of the zero vertical slip, the installation of tiles can begin from bottom to top.

Suitable to be used on conventional substrates such as concrete, cement mortar or plaster, on brick, cement or concrete block masonry, on gypsum fiberboards or cement fiberboards (after they are primed with suitable primer) in areas with increased moisture.

PACKAGING	ITEMS/PAL.
25kg paper bag	60

CONSUMPTION

Approximately 2-4 kg/m².

KP 300W FLEXY

Elastic polymer-modified tile adhesive

white



DESCRIPTION

High quality, flexible, cementitious tile adhesive with zero vertical slip and extended open time of adhesion.

Classified as **C2 TE S1** type adhesive according to European standards EN 12004 and EN 12002.

APPLICATIONS

For laying all types and dimensions of ceramic tiles, thin marbles, natural or artificial granite tiles, cotto, klinker, porcellanato, glass mosaics, etc.

Applied to floors and walls in indoor and outdoor areas.

Suitable for conventional substrates such as concrete, cement mortars, plaster, concrete blocks, etc, on gypsum fiberboards or cement fiberboards (after they are primed with appropriate primer), as well as substrates subject to contraction-expansion, heavy traffic or with constant moisture (floor heating, bathrooms, showers, swimming pools, shopping centers, hotels, tile on tile, etc.).

PACKAGING	ITEMS/BOX	ITEMS/PAL.
5kg plastic bag	4	144
25kg paper bag		60

CONSUMPTION

Approximately 2-4 kg/m².

KP 400W MARBLE & GRANITE

Enhanced polymer-modified adhesive for marble & granite white



DESCRIPTION

High quality cementitious adhesive with zero vertical slip and extended open time of adhesion. Classified as **C2 TE** type adhesive according to European standard EN 12004.

APPLICATIONS

For laying all types and dimensions of ceramic tiles, thin marbles, natural or artificial granite tiles, cotto, klinker, porcellanato, glass mosaics, etc. Ideal for laying marble and granite tiles of large dimensions, in indoor and outdoor floors and walls. Provides the option of applying at a thickness of up to 15mm. Suitable for conventional substrates, such as concrete, cement mortars, plaster, concrete blocks, etc., as well as cement fiberboards or gypsum fiberboards (after they are first primed with a suitable primer). It can be applied to surfaces subject to small contractions-expansions or heavy traffic (bathrooms, shopping centers, hotels, etc.).

PACKAGING	ITEMS/PAL.
25kg paper bag	60

CONSUMPTION

Approximately 2-4 kg/m².

KP 450 RAPID

Fast-setting polymer-modified tile adhesive



DESCRIPTION

Fast-setting cementitious tile adhesive with zero vertical slip, enhanced with polymer resins. Classified as **C2 FT** type adhesive according to European standard EN 12004. Available in white and grey.

APPLICATIONS

For laying absorbent (ceramic) and non-absorbent tiles (granite tiles, gres porcellanato) of all dimensions, decorative natural or artificial stones. Applied to floors and walls in indoor and outdoor areas. It is ideal for cases where the surfaces must be used in a short time (store refurbishing, etc.).

PACKAGING	ITEMS/BOX	ITEMS/PAL.
5kg plastic bag WHITE	4	144
25kg paper bag WHITE		60
25kg paper bag GREY		60

CONSUMPTION

Approximately 2-4 kg/m².

KP 500W ULTRA ELASTIC

High performance elastic polymer-modified tile adhesive white



DESCRIPTION

High quality, polymer-modified cementitious tile adhesive with zero vertical slip and extended open time of adhesion. Classified as **C2 TE S1** type adhesive according to European standards EN 12004 and EN 12002.

APPLICATIONS

For laying all types and dimensions of ceramic tiles, thin marbles, natural or artificial granite tiles, cotto, klinker, porcellanato, glass mosaics, etc. Applied to floors and walls in indoor and outdoor areas. Suitable for conventional substrates such as concrete, cement mortars, plaster, concrete blocks, etc., as well as substrates subject to contraction-expansion, heavy traffic or with constant moisture (floor heating, bathrooms, showers, swimming pools, shopping centers, hotels, tile on tile, etc.).

PACKAGING	ITEMS/PAL.
25kg paper bag	60

CONSUMPTION

Approximately 2-4 kg/m².

KP 600 ULTRA FLEX

One-component highly elastic polymer-modified tile adhesive



DESCRIPTION

Highly-elastic cementitious tile adhesive, enhanced with polymer resins, for highly demanding projects. It has zero vertical slip and extended open time of tile adhesion. Classified as **C2 TE S2** type adhesive according to European standards EN 12004 and EN 12002. Available in white and grey.

APPLICATIONS

For laying all types of tiles, of all dimensions, on walls and floors, in indoor and outdoor areas. Particularly suitable for surfaces where the demands for elasticity, adhesion and resistance to moisture are particularly increased (old floors, floor heating, metal surfaces, swimming pools, etc.).

PACKAGING	ITEMS/PAL.
25kg paper bag WHITE	60
25kg paper bag GREY	60

CONSUMPTION

Approximately 2-4 kg/m².

special application adhesives



PORO 510

Polymer-modified cementitious adhesive for aerated concrete blocks



DESCRIPTION

Cementitious adhesive for building and puttying aerated concrete blocks, reinforced with polymer resins. It exhibits strong adhesion and resistance to moisture and frost. Classified as M20-A1 type mortar according to European standard EN 998-2.

APPLICATIONS

For building all types and sizes of AAC blocks, as well as any other structural element with similar features (highly porous). Appropriate to be used for puttying the surfaces of structural elements.

PACKAGING	ITEMS/PAL.
25kg paper bag	60

CONSUMPTION

Approximately 20 kg/m³ of concrete blocks.

GL 520

Polymer-modified adhesive for glass blocks



DESCRIPTION

Polymer-modified cementitious adhesive for building and jointing glass blocks, enhanced with polymer resins with hydrophobic technology for greater protection of the joint. It exhibits strong adhesive strength and resistance to abrasion and moisture. Classified as M20-A1 type mortar according to European standard EN 998-2.

APPLICATIONS

For building and jointing glass blocks. Applied with trowel as usual. Suitable for indoor and outdoor areas.

PACKAGING	ITEMS/BOX	ITEMS/PAL.
5kg plastic bag	4	144
25kg paper bag		60

CONSUMPTION

Approximately 15 kg/m² masonry with glass blocks of usual dimensions.

KF 530

Refractory mortar for building and grouting fire bricks



DESCRIPTION

Cementitious mortar based on fireproof cement, for building and grouting fire bricks. It exhibits excellent resistance to high temperatures (1000°C), with strong adhesive strength and resistance to moisture. Classified as M40-A1 type mortar according to European standard EN 998-2.

APPLICATIONS

For building and grouting of all types of fire bricks to fireplaces, ovens, grills, chimneys and in general anywhere with high temperatures. Suitable for indoor and outdoor areas.

PACKAGING	ITEMS/BOX	ITEMS/PAL.
5kg plastic bag	4	144
25kg paper bag		60

CONSUMPTION

Indicatively: 5 kg/m² for 1cm joint width to 20x10x3cm fire bricks.

grouts



GROUT 0-3

Acrylic tile grout water repellent



DESCRIPTION

Cementitious acrylic grout for tile joints, enhanced with polymer resins. High resistance to abrasion and excellent colour stability. Available in 24 colours (see colour chart on page 33). Classified as **CG2** type grout according to European standard EN 13888.

APPLICATIONS

For **0-3mm** joints and all types of wall and floor tiles. Suitable for indoor and outdoor areas.

PACKAGING	ITEMS/BOX	ITEMS/PAL.
5kg plastic bag	4	144

CONSUMPTION

Depending on the width of the joint and the dimensions of the tiles. See the table of indicative grout consumptions on page 32.

GROUT 3-10

Acrylic tile grout water repellent



DESCRIPTION

Cementitious acrylic grout for tile joints, enhanced with polymer resins. High resistance to abrasion and excellent colour stability. Available in 24 colours (see colour chart on page 33). Classified as **CG2** type grout according to European standard EN 13888.

APPLICATIONS

For **3-10mm** joints and all types of wall and floor tiles. Suitable for indoor and outdoor areas.

PACKAGING	ITEMS/BOX	ITEMS/PAL.
5kg plastic bag	4	144

CONSUMPTION

Depending on the width of the joint and the dimensions of the tiles. See the table of indicative grout consumptions on page 32.

GROUT 6-20

Acrylic tile grout water repellent



DESCRIPTION

Cementitious acrylic grout for tile joints, enhanced with polymer resins. High resistance to abrasion and excellent colour stability. Available in 17 colours (see colour chart on page 33). Classified as **CG2** type grout according to European standard EN 13888.

APPLICATIONS

For **6-20mm** joints and all types of wall and floor tiles. Suitable for indoor and outdoor areas.

PACKAGING	ITEMS/BOX	ITEMS/PAL.
5kg plastic bag	4	144

CONSUMPTION

Depending on the width of the joint and the dimensions of the tiles. See the table of indicative grout consumptions on page 32.

EPOXY GROUT 2-12

2-component epoxy grout



DESCRIPTION

Bi-component epoxy grout, without organic solvents. It exhibits enhanced resistance to chemicals, it is water resistant and non-staining. Available in 5 colours: EP110 white, EP120 beige, EP130 light grey, EP140 grey and EP150 black. Classified as **RG** type grout according to European standard EN 13888.

APPLICATIONS

Used for grouting of ceramic tiles, mosaic tiles, marbles, natural stones and granites in swimming pools, hygiene areas (e.g. food preparation areas, hospitals, food and beverage industry, dairy industry), chemical laboratories and facilities, sewage plants, etc.

Suitable for vertical and horizontal applications.

PACKAGING

3kg plastic container

5kg plastic container

10kg plastic container

CONSUMPTION

Depending on the width of the joint and the dimensions of the tiles. See the table of indicative grout consumptions on page 32.

ELASTOGROUT

Polymeric liquid resin
for GROUT 0-3, GROUT 3-10
and GROUT 6-20



DESCRIPTION

Aqueous dispersion of synthetic polymers used in replacement of water for mixing cementitious grouts GROUT 0-3, GROUT 3-10 and GROUT 6-20, for improving their properties. It specifically improves grouts' mechanical and adhesive strength, while it increases their resistance to water and corrosive agents.

APPLICATIONS

The ELASTOGROUT system with the cementitious grouts is applied in cases of joints on balconies, terraces and swimming pools, in areas that are frequently steam cleaned, in areas with heavy traffic, for the repair of old joints, glass mosaics, etc.

PACKAGING	ITEMS/BOX	ITEMS/PAL.
1kg plastic container	14	378
5kg plastic container		112
20kg plastic container		36

CONSUMPTION

Approximately 1.3-1.6kg / 5kg grout, depending on the type and colour of the grout.

auxiliary materials



CROSS-SHAPED TILE SPACERS

DESCRIPTION

For creating joints when installing ceramic tiles.

CODE	THICKNESS (mm)	ITEMS/PACKAGING
Σ1	1	500
Σ2	2	500
Σ3	3	500
Σ4	4	500
Σ5	5	500
Σ7	7	500
Σ9	9	500
Σ10	10	250



T-SHAPED TILE SPACERS

DESCRIPTION

Plastic T-shaped spacers for creating joints when installing ceramic tiles.

CODE	THICKNESS (mm)	ITEMS/PACKAGING
T2	2	500
T3	3	500
T5	5	500
T7	7	500
T9	9	500



TILE WEDGES

DESCRIPTION

Plastic wedges for installing ceramic tiles.


CODE	THICKNESS (mm)	ITEMS/PACKAGING
Φ1	3-5	1000

grout consumption (kg/m²)

depending on the size of the tiles and the width of the joints

TILE DIMENSIONS (mm)	JOINT WIDTH (mm)							
	1	2	3	4	5	7	9	10
20 x 20 x 4	0.6	1.3	1.8					
50 x 50 x 4	0.2	0.5	0.7					
100 x 100 x 6	0.2	0.4	0.5	0.7	0.9			
100 x 100 x 8	0.2	0.5	0.7	1.0	1.2			
200 x 200 x 6	0.1	0.2	0.3	0.4	0.5			
200 x 200 x 8	0.1	0.2	0.3	0.5	0.6	0.8		
250 x 450 x 8	0.1	0.1	0.2	0.3	0.4	0.5		
300 x 600 x 10	0.1	0.2	0.2	0.3	0.4	0.5	0.7	0.8
300 x 600 x 12	0.1	0.2	0.3	0.4	0.5	0.6	0.8	0.9
330 x 330 x 8	0.1	0.1	0.2	0.3	0.4	0.5		
330 x 330 x 10	0.1	0.2	0.3	0.4	0.5	0.6	0.8	0.9
400 x 400 x 8	0.1	0.1	0.2	0.2	0.3	0.4		
400 x 400 x 10	0.1	0.2	0.2	0.3	0.4	0.5	0.7	
450 x 450 x 10	0.1	0.1	0.2	0.3	0.3	0.5	0.6	0.7
450 x 450 x 12	0.1	0.2	0.2	0.3	0.3	0.6	0.7	0.8
500 x 500 x 9	0.1	0.1	0.2	0.2	0.3	0.4	0.5	
600 x 600 x 10	0.1	0.1	0.2	0.2	0.2	0.3	0.4	0.5
600 x 600 x 12	0.1	0.1	0.2	0.2	0.3	0.4	0.5	0.6
800 x 800 x 12	0.1	0.1	0.1					
800 x 800 x 15	0.1	0.1	0.2	0.2	0.3	0.4	0.5	0.6

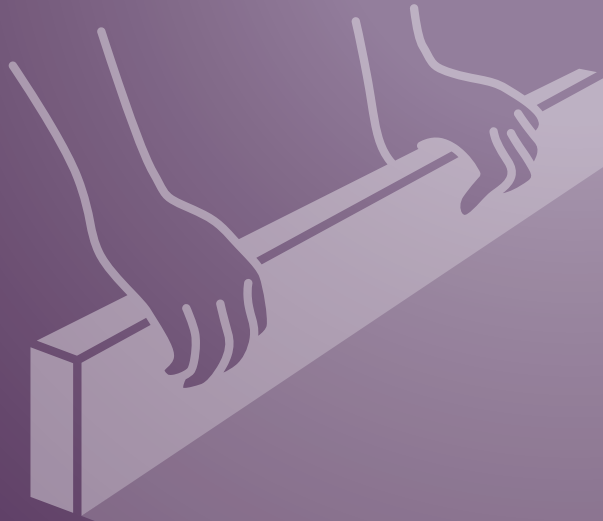
GROUT COLOUR CHART FOR GROUT 0-3, GROUT 3-10 & GROUT 6-20

COLOUR		CODE	GROUT 0-3	GROUT 3-10	GROUT 6-20
	WHITE	F 10	✱	○	▼
	PEARL GREY	F 20	✱	○	▼
	LONDON SKY	F 30	✱	○	▼
	GREY	F 40	✱	○	▼
	CEMENT GREY	F 50	✱	○	▼
	GRAFHITE	F 60	✱	○	▼
	BLACK	F 70	✱	○	▼
	VANILLA	F 80	✱	○	▼
	LEMON	F 90	✱	○	
	CORAL	F 100	✱	○	
	BEIGE	F 110	✱	○	▼
	CREAM	F 120	✱	○	▼
	CARAMEL	F 130	✱	○	▼
	LIGHT BROWN	F 140	✱	○	▼
	CERAMIC	F 150	✱	○	▼
	CHERRY BROWN	F 160	✱	○	▼
	DARK BROWN	F 170	✱	○	▼
	MOCCA	F 180	✱	○	▼
	COCOA	F 190	✱	○	▼
	BRIGHT SKY	F 200	✱	○	
	BLUE	F 210	✱	○	
	TURQUOISE	F 220	✱	○	
	LIGHT GREEN	F 230	✱	○	
	PISTACHIO	F 240	✱	○	

Rendering of colours in the chart is only indicative.



floor screeds



floor screeds



FLOW 110

Self-leveling polymer-modified cementitious screed (1-10mm)



DESCRIPTION

Ready-to-use, self-leveling, cementitious screed. Classified as CT-C40-F10-AR1 type cementitious screed according to European standard EN 13813.

APPLICATIONS

Ideal for leveling and smoothing floors that will be laid with tiles, carpet, wood or plastic floor, etc. Also, as final layer in areas such as basements, lofts and warehouses. Also suitable to be covered with epoxy coatings for heavy-duty applications. Suitable for 1-10mm thick layers.

PACKAGING	ITEMS/PAL.
25kg paper bag	60

CONSUMPTION

Approximately 1.5 kg/m² for a 1mm thick layer.

FLOW DÉCOR COLOUR

Coloured polymer-modified self-leveling cementitious floor screed (1-10mm)



DESCRIPTION

Coloured, self-leveling screed for smoothing and aesthetic upgrading interior floors. Classified as CT-C40-F9-AR2 type cementitious screed according to European standard EN 13813. Available in white, beige, light gray, anthracite gray, yellow, red and dark brown.

APPLICATIONS

Ideal for leveling and aesthetic upgrading interiors such as offices, playrooms, exhibitions, shops, hotels, shopping malls, etc. Suitable for 1-10mm thick layers.

PACKAGING	ITEMS/PAL.
25kg paper bag	60

CONSUMPTION

Approximately 1.5 kg/m² for a 1mm thick layer.

FLOW 540 RAPID

Fast setting self-leveling polymer-modified cementitious floor screed (5-40mm)



DESCRIPTION

Ready-to-use, self leveling, cementitious mortar for the leveling and filling of floors. It is classified as cementitious leveling mortar type CT-C40-F9-A9 according to European standard EN 13813.

APPLICATIONS

It is used internally for the filling and leveling of new or existing floors in industrial or other spaces and the construction of floors suitable for heavy human (malls, shops, offices) or vehicle traffic (warehouses). Suitable for 5-40mm thick layers.

PACKAGING	ITEMS/PAL.
25kg paper bag	60

CONSUMPTION

Approximately 16-17 kg/m² for a 1cm thick layer.

FS 100

Cementitious leveling
floor screed
fiber-reinforced



DESCRIPTION

Ready-to-use cementitious mortar for screeding floors and creating inclinations.
Classified as CT-C7-F3-A15 type cementitious screed according to European standard EN 13813.

APPLICATIONS

For screeding and leveling floors before they are laid with tiles, marble, floor coverings, etc.
Ideal also for creating inclinations in terraces and warehouses.
Suitable for indoor and outdoor areas.

PACKAGING	ITEMS/PAL.
25kg paper bag	60

CONSUMPTION

Approximately 14 kg/m²
for a 1cm thick layer.

HT 250 HARD TOP

Industrial floor surface
hardener



DESCRIPTION

Ready-to-use cement mortar for increasing abrasion resistance of the surface of industrial floors.
Classified as CT-C70-F7-AR2 type cementitious screed according to European standard EN 13813.
Available in four colours: grey, brick red, ochre and light blue.

APPLICATIONS

For increasing abrasion resistance of the surface of industrial floors and floors in general, subject to intense stresses.
Suitable for indoor and outdoor areas, parking lots, workshops, repair shops, warehouses, loading-unloading areas, etc.

PACKAGING	ITEMS/PAL.
25kg paper bag GREY	60
25kg paper bag COLOURED	60

CONSUMPTION

Approximately 2-5 kg/m².

certified external thermal insulation composite system



EPS THERMAL
INSULATING BOARD

GRAPHITE EPS
THERMAL
INSULATING BOARD

XPS THERMAL
INSULATING BOARD

FIBERGLASS MESH

ACRYLIC PRIMER 1350

SILICONE PRIMER 1450

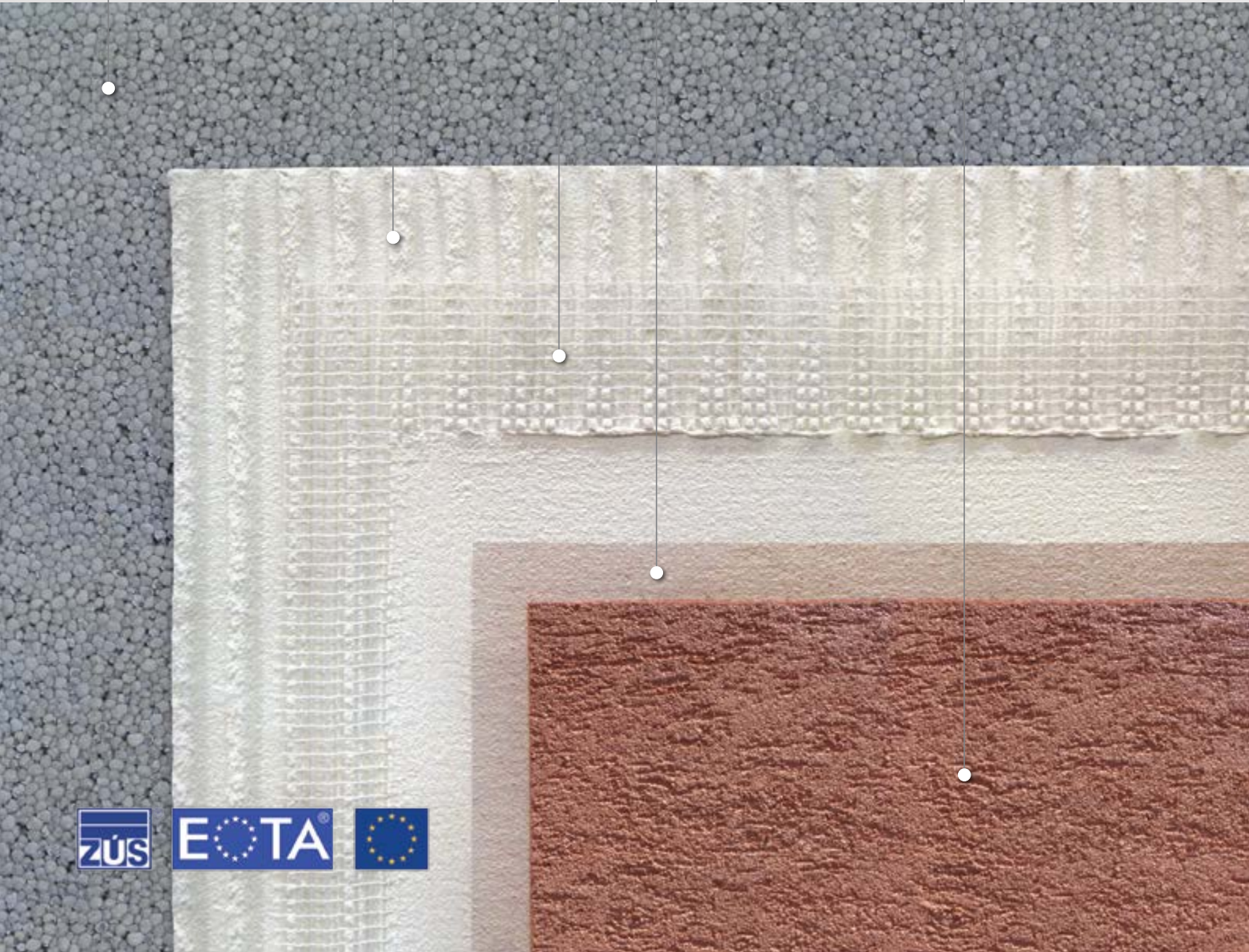
FC 1200

FC 1300•ACRYL

FC 1300•SILOXANE

FC 1300•SILICONE

FC 1100



Finoclima® external insulation composite system



Finoclima®



- Finoclima® system materials
- auxiliary materials



FC 1100

Polymer-modified adhesive for thermal insulation boards
fiber-reinforced - water repellent



DESCRIPTION

Fiber-reinforced cementitious adhesive, enhanced with polymer resins, for mounting thermal insulating boards on building facades.

It exhibits high plasticity and resistance to moisture and frost, high initial and final adhesive strength, zero vertical slip and extended open time for the adhesion of thermal insulating boards.

It is produced and controlled according to the requirements of EN 13499 and ETAG 004 for external thermal insulation systems.

APPLICATIONS

Ideal for the adhesion of thermal insulating boards made of extruded and expanded polystyrene on the facades of buildings.

Moreover, reinforced with suitable fiberglass mesh (140-160g/m², 4x4mm), it is used for covering the polystyrene surface and creating an ideal substrate, without cracks, for the plaster that will follow.

In combination with the **FINOMIX** polymer-modified, cement-based plasters or synthetic plasters, they compose the **Finoclima**® certified external thermal insulation composite system.

PACKAGING	ITEMS/PAL.
25kg paper bag WHITE	60

CONSUMPTION

- As adhesive:
Approximately 4-6 kg/m².
- As reinforced mortar:
Approximately 2-3 kg/m².

FC 1200

Polymer-modified final-coat plaster
fiber-reinforced - water repellent



DESCRIPTION

Fiber-reinforced, polymer-modified final-coat marble plaster.

It exhibits particularly high plasticity, adhesion and strong water repellency, without obstructing the water-vapor permeability of structural elements.

Classified as CS II-III / W1 / A1 type mortar according to European standard EN 998-1.

Available in two grain sizes (1.0mm and 3.5mm) depending on the desired result.

It is produced in 6 standard colours (see colour chart) and other colours on demand (minimum quantity 3,000kg). It can also be easily coloured with **NATURAL COLOURS** pigments in powder form.

APPLICATIONS

Used as final finish for surfaces i.e. as final-coat marble plaster after the base or traditional plaster coat.

Applied with a plastering machine or manually.

In combination with the fiber-reinforced FC 1100 adhesive for insulation boards, they compose the **Finoclima**® certified external thermal insulation composite system for the facades of buildings.

Suitable for interior and exterior use.

PACKAGING	ITEMS/PAL.
25kg paper bag WHITE	60
25kg paper bag COLOURED	60

CONSUMPTION

Approximately 6-7 kg/m² for a 5mm thick layer.

colour chart of coloured plasters FC 1200



Rendering of colours in the chart is only indicative.

FC 1300 ACRYL

Pasty acrylic
final-coat plaster
water repellent



DESCRIPTION

Ready-to-use plaster based on acrylic resins, for the aesthetic finish of ETIC Systems. It exhibits high elasticity and adhesion, while it allows breathing of the building elements. Coloured according to the **Finoclima**® PALETTE colour system. Produced in 4 different grain sizes (1mm, 1.5mm, 2.4mm, 3.5mm) depending on the desired aesthetic finish.

APPLICATIONS

Applied as final coat plaster of the **Finoclima**® certified ETIC System (ETA 15/0720). Suitable to be applied on any common substrate, e.g. render, plaster, cement/plasterboard. It is applied with steel or plastic trowel or with special spraying equipment. Suitable for indoors and outdoors.

PACKAGING	ITEMS/PAL.
25kg plastic container WHITE	24
25kg plastic container COLOURED	24

CONSUMPTION

FC 1300 - 1.0mm: 1.8-2.0 kg/m²
FC 1300 - 1.5mm: 2.0-2.5 kg/m²
FC 1300 - 2.4mm: 2.8-3.2 kg/m²
FC 1300 - 3.5mm: 3.5-4.0 kg/m²

ACRYLIC PRIMER 1350

Adhesion primer
for acrylic renders



DESCRIPTION

Ready-to-use acrylic primer with quartz aggregates that promotes adhesion of the decorative renders (cement, acrylic or waterglass based) on the substrate. It exhibits excellent adhesion on the substrate and can be coloured, thus ensuring colour uniformity of the finished surface.

APPLICATIONS

It is used to enhance adhesion of the decorative renders FC 1300•ACRYL and FC 1300•SILOXANE of the **Finoclima**® certified ETIC System (ETA 15/0720), on smooth and absorbent substrates, e.g. cement/gypsum boards, render/plaster, fair-faced concrete. It is produced white and can be coloured according to the **Finoclima**® PALETTE colour system, thus ensuring the colour uniformity of the decorative finishing. Suitable for indoors and outdoors.

PACKAGING	ITEMS/PAL.
5kg plastic container	96
20kg plastic container	24

CONSUMPTION

Approximately 0.25-0.30 kg/m² depending on the surface's absorbency and roughness.

FC 1300 SILICONE

Ready-to-use silicone resin
render in paste form
water repellent



DESCRIPTION

Ready-to-use plaster based on silicone and acrylic resins, for the aesthetic finish of ETIC Systems. It exhibits maximum hydrophobicity and breathability compared to ACRYL and SILOXANE while it maintains high elasticity and adhesion. Coloured according to the **Finoclima**® PALETTE colour system. Produced in 4 different grain sizes (1mm, 1.5mm, 2.4mm, 3.5mm) depending on the desired aesthetic finish.

APPLICATIONS

Applied as final coat plaster of the **Finoclima**® certified ETIC System (ETA 15/0720). Suitable to be applied on any common substrate, e.g. render, plaster, cement/plasterboard. It is applied with steel or plastic trowel or with special spraying equipment. Suitable for indoors and outdoors.

PACKAGING	ITEMS/PAL.
25kg plastic container WHITE	24
25kg plastic container COLOURED	24

CONSUMPTION

FC 1300 - 1.0mm: 1.8-2.0 kg/m²
FC 1300 - 1.5mm: 2.0-2.5 kg/m²
FC 1300 - 2.4mm: 2.8-3.2 kg/m²
FC 1300 - 3.5mm: 3.5-4.0 kg/m²

SILICONE PRIMER 1450

Adhesion primer for silicone renders



DESCRIPTION

Ready-to-use silicone primer with quartz aggregates that promotes adhesion of the silicone-based decorative renders on the substrate.

It exhibits excellent adhesion on the substrate can be coloured, thus ensuring colour uniformity of the finished surface.

APPLICATIONS

It is used to enhance adhesion of the decorative renders FC 1300•SILICONE of the **Finoclima** certified ETIC System (ETA 15/0720), on smooth and absorbent substrates, e.g. cement/gypsum boards, render/plaster, fair-faced concrete.

It is produced white and can be coloured according to the **Finoclima** PALETTE colour system, thus ensuring the colour uniformity of the decorative finishing. Suitable for indoors and outdoors.

PACKAGING	ITEMS/PAL.
5kg plastic container	96
20kg plastic container	24

CONSUMPTION

Approximately 0.25-0.30 kg/m² depending on the surface's absorbency and roughness.

FC 1300 SILOXANE

Ready-to-use acrylic resin render in paste form, siloxane improved water repellent



DESCRIPTION

Ready-to-use plaster based on acrylic resins modified with siloxane water-repelling additives, for the aesthetic finish of ETIC Systems.

It exhibits significantly increased hydrophobicity compared to ACRYL while it maintains high elasticity and adhesion and allows breathing of the building elements. Coloured according to the **Finoclima** PALETTE colour system.

Produced with 4 different grain sizes (1mm, 1.5mm, 2.4mm, 3.5mm) depending on the desired aesthetic finish.

APPLICATIONS

Applied as final coat plaster of the **Finoclima** certified ETIC System (ETA 15/0720).

Suitable to be applied on any common substrate, e.g. render, plaster, cement/plasterboard.

It is applied with steel or plastic trowel or with special spraying equipment.

Suitable for indoors and outdoors.

PACKAGING	ITEMS/PAL.
25kg plastic container WHITE	24
25kg plastic container COLOURED	24

CONSUMPTION

FC 1300 - 1.0mm: 1.8-2.0 kg/m²

FC 1300 - 1.5mm: 2.0-2.5 kg/m²

FC 1300 - 2.4mm: 2.8-3.2 kg/m²

FC 1300 - 3.5mm: 3.5-4.0 kg/m²

auxiliary materials



EPS THERMAL INSULATING BOARDS

DESCRIPTION

Expanded polystyrene boards for the **Finoclima** external thermal insulation system.

CODE	DENSITY kg/m ³	THICKNESS (mm)	λ (W/m·K)
EPS 80	15-17	30	0.036
		50	
		60	
		70	
EPS 100	18-20	30	0.034
		50	
		60	
		70	



GRAPHITE EPS INSULATING BOARDS

DESCRIPTION

Graphite expanded polystyrene boards for the **Finoclima** external thermal insulation system.

CODE	DENSITY kg/m ³	THICKNESS (mm)	λ (W/m·K)
EPS 80	15-17	30	0.031
		50	
		60	
		70	
EPS 100	18-20	30	0.031
		50	
		60	
		70	



XPS THERMAL INSULATION BOARDS

DESCRIPTION

Extruded polystyrene boards for the **Finoclima** external thermal insulation system.

THICKNESS (mm)	λ (W/m·K)	R (m ² ·K/W)
30	0.034	0.882
40		1.176
50		1.471
60		1.765
70		2.059
80		2.353



ANCHORS

DESCRIPTION

Anchors for the **Finoclima** external thermal insulation system. Certified according to ETA.

Suitable for concrete, masonry and stone.

Available from 7cm to 20cm, depending on the thickness of the thermal insulation board, the type and quality of the substrate.

CODE	DIMENSIONS (mm)	INSULATION THICKNESS	ITEMS/PACKAGING
B1	60x10x70	20mm	200
B2	60x10x90	40mm	200
B3	60x10x120	70mm	200
B4	60x10x140	90mm	200
B5	60x10x160	110mm	200
B6	60x10x180	130mm	200
B7	60x10x200	150mm	200

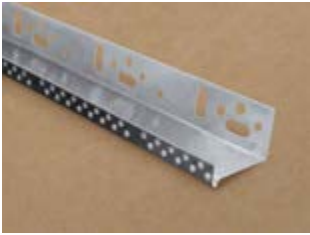


FIBERGLASS MESH

DESCRIPTION

Alkali resistant fiberglass mesh 160gr/m² suitable for the **Finoclima** external thermal insulation system. Certified according to ETAG 004.

COLOUR	SQUARE OPENING (mm)	WEIGHT	DIMENSIONS
White	4x4	160gr/m ²	1x50m (50m ²)

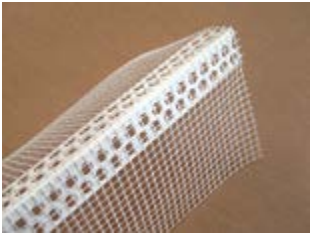


STARTER PROFILE

DESCRIPTION

Aluminum starter profile for the **Finoclima**® external thermal insulation system.

DIMENSIONS (mm)	LENGTH	ITEMS/BOX
40	2.5m	25
50	2.5m	25
60	2.5m	25
70	2.5m	25
80	2.5m	25

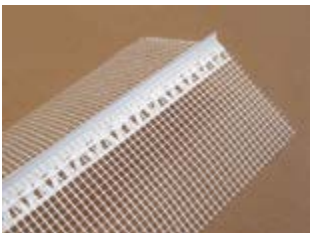


PVC MESH ANGLE BEAD

DESCRIPTION

PVC angle corner bead with alkali resistant mesh for the **Finoclima**® external thermal insulation system.

MESH DIMENSIONS		ANGLE BEAD DIMENSIONS (mm)	LENGTH	ITEMS/BOX
WIDTH (cm)	SQUARE OPENING (mm)			
10+10	4x4	21x21	2.5m	50



MESH WATER DRIP PROFILE

DESCRIPTION

Water drip profile with alkali resistant mesh, suitable for the **Finoclima**® external thermal insulation system.

MESH DIMENSIONS		PROFILE DIMENSIONS (mm)	LENGTH	ITEMS/BOX
WIDTH (cm)	SQUARE OPENING (mm)			
10+10	4x4	21x21	2.5m	20



PLASTIC MILLING

DESCRIPTION

Plastic milling for the **Finoclima**® external thermal insulation system.

DIMENSIONS	ITEMS/PACKAGING
Ø 65mm	1



PLASTIC MILLING FOR THE SHAPING OF THERMAL INSULATING BOARDS

DESCRIPTION

Plastic milling for the shaping of thermal insulating boards in facade thermal insulation applications.

DIMENSIONS	ITEMS/PACKAGING
Ø 68mm	1



- water repellent coloured plasters
- microcement mortars
- adhesion promoting primers
- varnishes & impregnation materials



water repellent coloured plasters



SD 60C COLOUR

Coloured decorative final-coat plaster
polymer-modified - water resistant



DESCRIPTION

Coloured final-coat marble plaster, enhanced with polymer resins. Exhibits increased plasticity and adhesion compared to simple final-coat plasters, and it is also water repellent. Classified as CS II / W1 / A1 type mortar according to European standard EN 998-1. Available in two grain sizes (1.0mm and 3.5mm) depending on the desired aesthetic result. It is produced in 6 standard colours (see colour chart) and other colours on demand (minimum quantity 3,000kg). It can also be easily coloured with NATURAL COLOURS pigments in powder form.

APPLICATIONS

Used as final finish for surfaces i.e. as final-coat marble plaster after the base coat or traditional plaster coat. Applied with a plastering machine or manually. Suitable for interior and exterior use.

PACKAGING	ITEMS/PAL.
25kg paper bag WHITE	60
25kg paper bag COLOURED	60

CONSUMPTION

Approximately 6-7 kg/m² for a 5mm thick layer.

colour chart of coloured plasters SD 60C COLOUR



Rendering of colours in the chart is only indicative.

microcement mortars



SD 70 DÉCOR

Microcement decorative mortar for floor & wall applications
polymer-modified - water resistant



DESCRIPTION

Ready-mixed, fiber-reinforced cement mortar for creating smooth surfaces, using the traditional surface finishing technique on interior and exterior walls and floors. Exhibits high resistance to abrasion, excellent bonding with the substrate and excellent resistance to moisture. Classified as GP CS IV, W2 type mortar according to European standard EN 998-1. It is produced in 6 standard colours (see colour chart) and other colours on demand (minimum quantity 3,000kg). It can also be easily coloured with NATURAL COLOURS pigments in powder form.

APPLICATIONS

Used on walls and floors, and for special constructions such as pools, custom-made bathtubs and washbasins, tables, stairs, etc., adding to constructions the unique aesthetics of Cycladic architecture. Suitable for floors and walls in indoor and outdoor areas.

PACKAGING	ITEMS/PAL.
25kg paper bag WHITE	60
25kg paper bag COLOURED	60

CONSUMPTION

Approximately 13-15 kg/m² for a 1cm thick layer.

colour chart of microcement mortars SD 70 DÉCOR & SD 80 DÉCOR•FLEX



Rendering of colours in the chart is only indicative.

SD 80 DÉCOR•FLEX

Flexible microcement decorative mortar for floor & wall applications
polymer-modified - water resistant



DESCRIPTION

Ready-mixed, fiber-reinforced cement mortar for creating smooth surfaces, using the traditional surface finishing technique on interior and exterior walls and floors. It exhibits high flexibility, as well as high resistance to abrasion, excellent bonding with the substrate and excellent resistance to moisture. It is classified as type PCC-R2 cementitious repair mortar according to European standard EN 1504-03. It is produced in 6 standard colours (see colour chart p. 46) and other colours on demand (minimum quantity 3,000kg). It can also be easily coloured with NATURAL COLOURS pigments in powder form.

APPLICATIONS

Used on floors and walls, indoors and outdoors, on concrete substrates, reinforced plaster, gypsum boards, cement boards, old floors (mosaic, natural stone, tiles), as well as for special constructions such as pools, custom-made bathtubs and washbasins, tables, stairs, etc., adding to constructions the unique aesthetics of Cycladic architecture. It is ideal for renovations, restorations and new constructions.

PACKAGING	ITEMS/PAL.
25kg paper bag WHITE	60
25kg paper bag COLOURED	60

CONSUMPTION

Approximately 6 kg/m² for a 4mm thick layer.

SD 90 DÉCOR•MICRO FLEX

Elastic microcement mortar for floor & wall applications
polymer-modified - water resistant



DESCRIPTION

Elastic, extra-fine coarsed cement mortar, formulated for creating smooth, modern and durable surfaces on interior and exterior walls and floors. It exhibits exceptionally high flexibility, as well as high resistance to abrasion, excellent bonding with the substrate and excellent resistance to moisture. It is classified as 1-component, cementitious mortar for surface protection of concrete surfaces according to European standard EN 1504-02. It can also be easily coloured with NATURAL COLOURS pigments in powder form.

APPLICATIONS

Used on floors and walls, indoors and outdoors, on any type of substrate (concrete, plaster, old floors, underfloor heating, gypsum boards, cement boards, MDF). Ideal for creating unique aesthetics structures such as custom-made bathtubs and washbasins, countertops, tables, etc. It is ideal for renovations, restorations and new constructions.

PACKAGING	ITEMS/PAL.
10kg plastic container	48
20kg paper bag	60

CONSUMPTION

Approximately 1.5 kg/m² for a 1mm thick layer.

SD 300

Polymer-modified cementitious leveling mortar



DESCRIPTION

Polymer-modified, cement-based mortar for the levelling and reinforcement of surfaces to be covered with microcement toppings. It exhibits high initial and final adhesion strength, high elasticity, and moisture and frost resistance. It is classified as general purpose rendering mortar type GP-CS IV according to the European standard EN 998-1, as well as mortar for the protection of the surface of concrete structures according to the European standard EN 1504-2 (principles MC-IR).

APPLICATIONS

It is suitable for the preparation of surfaces to be covered with microcement topping mortars on floors and walls, but also as a surface treatment of concrete structures before painting. It is applied on any type of substrate, e.g. concrete, render, masonry, cement/gypsum boards, wood, porcelain and metal. On very absorptive or non-absorptive substrates, like wood, ceramic tiles or metal, it is necessary to treat the substrate with a suitable primer before applying SD 300.

PACKAGING	ITEMS/PAL.
25kg plastic container	24

CONSUMPTION

Approximately 1.5 kg/m² for a 1mm thick layer.

NATURAL COLOURS

Natural pigments in powder form



DESCRIPTION

High quality natural inorganic pigments for colouring of mortars.

APPLICATIONS

Ideal for colouring SD 70 DÉCOR, SD 80 DÉCOR•FLEX and SD 90 DÉCOR•MICRO FLEX cementitious mortars, and SD 60 COLOUR and FC 1200 cementitious plasters. Suitable for use indoors and outdoors. Available in 10 bases (light brown, dark brown, reddish brown, brick-red, black, blue, orange, green, ochre and white), which make up the 120 shades of NATURAL COLOUR CREATIONS colour chart.

PACKAGING	ITEMS/BOX
50gr plastic container	96

adhesion promoting primers



FINO•CONTACT

Adhesion promoting primer with quartz aggregates



DESCRIPTION

Adhesion promoting primer based on synthetic resins. It also contains quartz sand of selected quality and grain size and special additives.

APPLICATIONS

It is applied on smooth, absorptive or non-absorptive substrates, such as cement screeds, fair-faced concrete, ceramic tiles, marble, polystyrene, etc. The application of FINO•CONTACT creates a rough, alkaline-resistant surface which significantly increases the adhesion of cement, lime or gypsum based mortars on it. Indicatively, it can be used before applying renders, plasters, tile adhesives, microcement mortars, self-leveling cement mortars, etc. Suitable for interior and exterior use.

PACKAGING	ITEMS/PAL.
5kg plastic container	96
20kg plastic container	24

CONSUMPTION

Approximately 0.3-0.4 kg/m² depending on the substrate's type.

varnishes & impregnation materials



DECODUR COAT•PU 2K GLOSS

Bi-component polyurethane varnish with gloss finish



DESCRIPTION

Polyurethane, aliphatic, 2-component varnish with a glossy finish. It exhibits high UV resistance (does not turn yellowish) due to UV filters it contains, and high mechanical strength.

APPLICATIONS

Used for the protection of microcement surfaces, surfaces made of concrete, wood and metal, epoxy and industrial floors as well as swimming pools.

PACKAGING	ITEMS/BOX
1kg (A+B)	8
5kg (A+B)	

CONSUMPTION

100-150 gr/m² per layer.

DECODUR COAT•PU 2K MAT

Bi-component
polyurethane varnish
with matte finish



DESCRIPTION

Polyurethane, aliphatic, 2-component varnish with a matte finish.

It exhibits high UV resistance (does not turn yellowish) due to UV filters it contains, and high mechanical strength. Dilute with PU•SOLVENT.

APPLICATIONS

Used for the protection of microcement surfaces, as well as epoxy and industrial floors.

PACKAGING	ITEMS/BOX
1kg (A+B)	8
5kg (A+B)	

CONSUMPTION

100-150 gr/m² per layer.

DECODUR COAT•PU 2K•W MAT

Bi-component polyurethane
water-based varnish
with matte finish



DESCRIPTION

Polyurethane, aliphatic, 2-component solvent-free varnish, with a matte finish.

It exhibits high UV resistance (does not turn yellowish) due to UV filters it contains, and high mechanical strength. Dilute with water.

APPLICATIONS

Used for the protection of microcement surfaces, surfaces made of stone, wood and industrial cementitious floors mildly stressed.

Ideal for places where solvent smells are undesirable.

PACKAGING	ITEMS/BOX
1kg (A+B)	8
3kg (A+B)	

CONSUMPTION

100-150 gr/m² per layer.

PU•SOLVENT

Thinner for polyurethane
sealing membranes



DESCRIPTION

Thinner for the polyurethane, brushable, sealing membrane HYDROFLEX•PU and the polyurethane PU varnishes DECODUR COAT•PU 2K GLOSS and DECODUR COAT•PU 2K MAT.

APPLICATIONS

It is added in polyurethane-based materials in order to facilitate its application by roller, brush or airless spraying. Also suitable for the cleaning of tools after application.

PACKAGING	ITEMS/BOX
1lt metal container	8
5lt metal container	

CONSUMPTION

- Approximately 5-15% b.w. dilution of HYDROFLEX•PU for application by roller or brush.
- Approximately 5-10% b.w. dilution of HYDROFLEX•PU for application by spraying.

ACRYLIC PRIMER

Water-based acrylic deep-penetrating primer



DESCRIPTION

Aqueous dispersion of acrylic resins, which due to the very small size of their particles, achieve exceptionally high penetration in porous surfaces, thus stabilizing them and enabling the proper adhesion on them. Contains no organic solvents.

APPLICATIONS

Ready-to-use primer, to ensure the adhesion of waterproofing elastomers (cementitious, acrylic, hybrid), acrylic plasters as well as water-thinnable paints.

It is applied on brittle substrates, e.g. old concrete, render, AAC blocks, gypsum/cement boards, stabilizing them and ensuring the proper adhesion of the next layers.

PACKAGING	ITEMS/BOX	ITEMS/PAL.
1kg plastic container	14	378
5kg plastic container		112
20kg plastic container		36

CONSUMPTION

Approximately 0.1-0.2 kg/m² depending on the surface's absorptency.

SIL-PROOF 5050

Silicone-based solution for waterproofing



DESCRIPTION

Ready-to-use, transparent, silicone/siloxane-based liquid with solvents, for waterproofing inorganic substrates.

APPLICATIONS

Used to waterproof and protect from rain surfaces, such as natural and artificial stones, unpainted plasters, fair-faced concrete, roof tiles, as well as tile joints. Ideal for protecting the colour of SD 60C COLOUR decorative plasters.

PACKAGING	ITEMS/PAL.
3lt metal container	120
20lt metal container	24

CONSUMPTION

Approximately 0.2-0.4 lt/m² depending on the surface's absorptency.

SIL-PROOF 5080

Hydrophobic & oleophobic impregnation



DESCRIPTION

Water-based solution for the impregnation of construction materials like natural or artificial stone, renders, etc. It imparts long lasting hydrophobicity and oleophobicity without affecting the water-vapor permeability and the colour of surfaces. Additionally, it protects materials from water and oil penetration, thus preventing staining from oily dirt and mold growth, while it increases their resistance to frost and eliminates efflorescence. It fully complies with European Norm EN 1504-02.

APPLICATIONS

Used for the waterproofing and oleoproofing protection against rain and oil of plaster, tile joints, natural and artificial stones, concrete, bricks, aerated concrete and other building materials.

PACKAGING	ITEMS/BOX	ITEMS/PAL.
1kg plastic container	14	378
5kg plastic container		112
20kg plastic container		36

CONSUMPTION

Approximately 0.25-0.50 kg/m².

building mortars & premixed plasters



- building mortars
- premixed plasters
- plaster primers
- auxiliary materials





LK 10

Masonry mortar



DESCRIPTION

Ready-to-use cementitious mortar for building bricks, cement blocks, stone and other structural materials. Classified as M5 type mortar according to European standard EN 998-2.

APPLICATIONS

Used for building all types of structural materials such as bricks, cement blocks, stone, etc. Can also be used for small-scale works and repairs.

PACKAGING	ITEMS/BOX	ITEMS/PAL.
5kg plastic bag	4	144
25kg paper bag		60
40kg paper bag		35

CONSUMPTION

Approximately 15-16 kg/m² for a 1cm thick layer.

LK 15W

Stone & marble mortar
polymer-modified - water repellent



DESCRIPTION

Ready-to-use cementitious mortar, enhanced with special polymeric additives, suitable for building stone and laying marble on floors, stairs, marble sills, etc. Classified as M10 type mortar according to European standard EN 998-2. Available in white, grey and ochre.

APPLICATIONS

Used for the building and jointing of dressed stone, as well as laying marble tiles or other natural stones on cementitious substrates. Can also be used for small-scale works and repairs. Suitable for interior and exterior use.

PACKAGING	ITEMS/PAL.
40kg paper bag	35

CONSUMPTION

Approximately 14-15 kg/m² for a 1cm thick layer.

LK 30

Coloured fiber-reinforced cementitious mortar for roof tiles
polymer-modified - water repellent



DESCRIPTION

Ready-to-use, fiber-reinforced, cementitious mortar enhanced with polymer resins for the installation of roof tiles. It exhibits negligible shrinkage, strong adhesive strength and resistance to moisture and frost. Classified as M20 type mortar according to European standard EN 998-2. Available in white, grey, brick red and ochre.

APPLICATIONS

Used for the safe adhesion of ridges, gables, as well as for repairing and sealing gaps in all types of roof tiles. Suitable for building stone or other structural material, as well as for small-scale works and repairs.

PACKAGING	ITEMS/PAL.
25kg paper bag	60

CONSUMPTION

Approximately 14-15 kg/m² for a 1cm thick layer.

LK 40

Adhesive mortar for thermal-insulating bricks



DESCRIPTION

Fiber-reinforced, cement-based masonry mortar for the installation of thermal-insulating bricks or any other type of bricks. It exhibits high initial and final adhesion strength and excellent workability. Classified as a M10 - W0 - A1 type masonry mortar according to European standard EN 998-2.

APPLICATIONS

For the installation of thermal-insulating bricks or any other type of bricks.

PACKAGING	ITEMS/PAL.
25kg paper bag	60

CONSUMPTION

Depends on the application and the type of bricks. Indicatively, for bricks of 25cm in width, a 25kg bag yields about 3.5-4.5 m².

BET C 20/25

Ready-mixed dry concrete



DESCRIPTION

Ready-mixed dry concrete. Classified as concrete of exposure class XC1 and compressive strength class C20/25 according to the Greek CTR and the European standard EN 206.

APPLICATIONS

Used for small-scale works and repairs, for lintels and wall ties, for fair-faced concrete and also for laying floors at the construction site. Suitable for application in all construction works where corresponding quality concrete is required.

PACKAGING	ITEMS/PAL.
30kg paper bag	48

CONSUMPTION

Indicatively: 1000kg dry concrete produce approximately 0.5m³ concrete. In single lintel (10x12) the 1000kg dry concrete produce 30m, while in double (25x12) they produce 15m.

ANTI•LIME POWDER

Mortar plasticizer in powder form



DESCRIPTION

Plasticizing admixture in powder form, that fully replaces lime in cementitious mortars.

APPLICATIONS

Used for masonry mortars, paving, marble paving and plasters, significantly improving plasticity, workability and final strength. Suitable for application by hand or pumping machine.

PACKAGING	ITEMS/PAL.
25kg paper bag	45

CONSUMPTION

Approximately 5-12kg / 50kg of cement.

HIGH PERFORMANCE CEMENT



DESCRIPTION

High performance Portland cement, suitable for demanding construction projects. Available in white (CEM I 52.5R) and grey (CEM I 42.5N).

APPLICATIONS

Used for the creation of quality mortars for repairing, sealing, restoring and correcting plasters, and for any project that requires cement.

PACKAGING	ITEMS/BOX	ITEMS/PAL.
4kg plastic bag GREY	4	144
4kg plastic bag WHITE	4	144
25kg paper bag WHITE		60

CONSUMPTION

Depending on the application.

premixed plasters



SP 20

Rough cast render polymer-modified



DESCRIPTION

Ready-mixed cement mortar for the rough cast plaster layer, enhanced with polymer resins. Classified as CS IV / W1 / A1 type mortar according to European standard EN 998-1.

APPLICATIONS

Used before the base-coat plaster or one-coat plaster, creating a very strong layer with increased adhesion on all surfaces, capable to receive the subsequent plaster layers. Recommended for difficult substrates such as ceilings, columns, lintels, beams, insulating materials, etc. Can also be used for small-scale repair works. Applied with a plastering machine or manually. Suitable for interior and exterior use.

PACKAGING	ITEMS/PAL.
25kg paper bag	60
40kg paper bag	35

CONSUMPTION

Approximately 6-7 kg/m² for a 4mm thick layer.

SB 30

Base-coat render



DESCRIPTION

Ready-mixed, base-coat plaster, based on grey cement. It is applied manually or with suitable mixing-pumping equipment (rotor-stator or piston). Classified as CS II / W0 / A1 type mortar according to European standard EN 998-1.

APPLICATIONS

Used for the leveling of walls before finishing with the final plaster coat.
An ideal substrate for ready-mixed, coloured decorative SD 60C COLOUR plasters.
Suitable for interior and exterior use.

PACKAGING	ITEMS/PAL.
30kg paper bag	48

CONSUMPTION

Approximately 13-15 kg/m² for a 1cm thick layer.

ST 40

Final-coat render

polymer-modified - water repellent white



DESCRIPTION

Ready-mixed, white, final-coat marble plaster, enhanced with polymer resins. Classified as CS II / W1 / A1 type mortar according to European standard EN 998-1.

APPLICATIONS

Used for the smoothing for surfaces, as final-coat marble plaster after the base coat or traditional plaster coat. Applied with a plastering machine or manually. Suitable for interior and exterior use.

PACKAGING	ITEMS/PAL.
30kg paper bag	48

CONSUMPTION

Approximately 6-7 kg/m² for a 5mm thick layer.

SM 50

One-coat render

polymer-modified - water repellent white



DESCRIPTION

Ready-mixed, white, one-coat plaster, enhanced with polymer resins. Classified as CS III / W1 / A1 type mortar according to European standard EN 998-1.

APPLICATIONS

Used after the rough cast plaster, instead of the base-coat plaster and the final-coat plaster, producing a smooth final surface ready to be painted. Applied with a plastering machine or manually. Can also be used for small-scale repair works. Suitable for interior and exterior use.

PACKAGING	ITEMS/PAL.
30kg paper bag	48

CONSUMPTION

Approximately 14-15 kg/m² for a 1cm thick layer.

FINO SUPERPLAST

Extra-strength, polymer-modified, finish-coat render

fiber-reinforced - water repellent grey



DESCRIPTION

Polymer-modified, grey cementitious mortar, reinforced with synthetic micro-fiber, ideally used as finish-coat render. It provides excellent adhesion, high mechanical strengths, enhanced water repellency, ease of application and excellent finish. Classified as CS III - W1 - A1 general purpose rendering mortar according to European standard EN 998-1.

APPLICATIONS

Used as finish-coat render on surfaces like:

- Base-coat renders.
- Cement-blocks, AAC blocks or other type of lightweight blocks, bricks, etc.
- Fair-face concrete structures.
- Rough plaster surfaces (rough-cast, graffiato, etc.) that need to become even.

Suitable for indoors and outdoors.

PACKAGING	ITEMS/PAL.
25kg paper bag	60

CONSUMPTION

About 1.4 kg/m² per 1mm of thickness. Indicatively, 1MT of dry-mortar yields 250-300m², depending on the application thickness and the irregularities of the substrate.

plaster primers



EQ•PRIMER 5200

Plaster primer for equalizing the substrate's absorbance



DESCRIPTION

Liquid plaster primer used to regulate the absorbance of surfaces to be plastered. It makes the substrate partially hydrophobic and thus ensures that the plaster will not be dehydrated due to the substrate's high absorbency. Contains no organic solvents.

APPLICATIONS

It is used on very absorbent substrates before plastering, such as brick masonry, AAC blocks, etc., in order to prevent the dehydration of the plaster from the substrate absorbing the water. It is also applied before the application of the final-coat SD 60C COLOUR coloured decorative plasters in order to ensure uniformity of the plaster's colour.

PACKAGING	ITEMS/BOX	ITEMS/PAL.
1kg plastic container	14	378
5kg plastic container		112
20kg plastic container		36

CONSUMPTION

Approximately 0.05-0.10 kg/m² depending on the surface's absorbance.

auxiliary materials



POLYPROPYLENE FIBERS

DESCRIPTION

Alkali resistant, polypropylene fibers with high dispersion capability, for the reinforcement of plasters and other cementitious mortars, avoiding shrinkage-cracking.

SIZE	CONSUMPTION	PACKAGING	ITEMS/BOX
3mm 6mm 12mm	900-1200 gr/m ³	900 gr/item	20



PLASTER REINFORCEMENT FIBERGLASS MESH

DESCRIPTION

Alkali resistant fiberglass mesh for reinforcing plasters and cementitious mortars, and avoiding cracking.

COLOUR	SQUARE OPENING	WEIGHT	DIMENSIONS
Blue	10x10mm	90 gr/m ²	1x50m (50m ²)
White	4x4mm	160 gr/m ²	1x50m (50m ²)



FIBERGLASS MESH ADHESIVE TAPE

DESCRIPTION

Fiberglass mesh adhesive tape for reinforcing gypsum-boards, cement-boards, fiberboards, etc. Also suitable for repairing cracks on masonry and plaster surfaces.

COLOUR	WEIGHT	DIMENSIONS	ITEMS/BOX
White	60 gr/m ²	0.05x20m	30



CORNER BEADS

DESCRIPTION

Corner beads for supporting masonry corners.

TYPE	DIMENSIONS	LENGTH	ITEMS/BOX
PVC	40x40x6mm	2.5m	60

application machines

m-tec D-20
SINGLE-PHASE MORTAR
MIXER



m-tec MONO-MIX
SINGLE-PHASE MORTAR
MIXING PUMP



m-tec M300
THREE-PHASE MORTAR
MIXING PUMP



m-tec P30
THREE-PHASE
MORTAR PUMP

dry mortar silos

Aiming to provide its customers with the best available solutions, and being an innovator in the dry mortar field, **FINOBETON S.A.** offers the **FINOMIX** products in 7m³ and 22m³ silos, for the production of masonry mortars, plasters and floor screeds.

The use of the ready-mixed **FINOMIX** dry mortars in silos provides our customers with the following advantages:

- Clean construction site with respect to the environment
- Saves time - Increases productivity
- Significantly reduces labor and construction cost
- Avoids loss of materials - Immediate availability
- Ensures health and safety at work.

The **FINOMIX** dry mortar silos are available with an integrated automatic mixer, with a 2.5 m³/hour production capacity.

The company's specialized technicians provide its customers complete training and technical support to ensure trouble-free operation of silos, as well as, fast and accurate service during the distribution and supply of silos.





**concrete & mortar
admixtures**





LATEX

Enhancing resin for mortars



DESCRIPTION

Admixture based on polymer resins, for multiple improvements of mortar properties.

APPLICATIONS

Used as an admixture, replacing part of the water required for mixing cementitious mortars (traditional or premixed), significantly improving the properties of materials.

PACKAGING	ITEMS/BOX	ITEMS/PAL.
1kg plastic container	14	378
5kg plastic container		112
20kg plastic container		36

CONSUMPTION

Indicatively: 10-15% b.w. of cement, depending on the application.

ECO•LATEX

Enhancing polymer resin for mortars



DESCRIPTION

Liquid enhancing admixture for the modification of mortars.

It's composition based on ammonia-free and APEO (Alkyphenol ethoxylates)-free synthetic resins makes ECO•LATEX totally friendly towards environment.

APPLICATIONS

Used as an admixture, replacing part of the water required for mixing cement mortars (traditional or premixed), significantly improving the properties of materials regarding adhesion, abrasion resistance, elasticity and water permeability.

PACKAGING	ITEMS/BOX	ITEMS/PAL.
1kg plastic container	14	378
5kg plastic container		112
20kg plastic container		36

CONSUMPTION

Indicatively: 10-20% b.w. of cement, depending on the application.

FINO•PLAST

Liquid admixture for the improvement of mortars



DESCRIPTION

Enhancing emulsion based on polymer resins, for multiple improvements of mortar properties.

APPLICATIONS

Used as an admixture, replacing part of the water required for mixing cementitious mortars (traditional or premixed), significantly improving the properties of materials (adhesion, abrasion resistance, elasticity and water permeability). Ideal for the creation of a bonding layer between old and new concrete or mortar.

PACKAGING	ITEMS/BOX	ITEMS/PAL.
1kg plastic container	14	378
5kg plastic container		112
20kg plastic container		36

CONSUMPTION

Indicatively: 5-10% b.w. of cement, depending on the application.

FINOFLEX

Elastifying admixture for mortars



DESCRIPTION

Elastomeric emulsion based on acrylic resins, ideal for increasing elasticity in cementitious brushable sealing mortars, tile adhesives and other cementitious mortars.

APPLICATIONS

Used in order to enhance elasticity, adhesion, hydrophobicity and UV resistance of mortars.

PACKAGING	ITEMS/BOX	ITEMS/PAL.
1kg plastic container	14	378
5kg plastic container		112
20kg plastic container		36

CONSUMPTION

Mixing ratio FINOFLEX:water from 1:1 up to complete replacement of mixing water, depending on the product and the desirable plasticizing degree.

PLASTOLIT

Liquid mortar plasticizer - replaces lime



DESCRIPTION

Liquid plasticizer and air entraining additive that significantly improves workability of cementitious mortars. Fully replaces lime.

APPLICATIONS

Used for masonry mortars and base and final coat plasters, significantly improving workability and final strengths, for application by hand or pumping machine.

PACKAGING	ITEMS/BOX	ITEMS/PAL.
1kg plastic container	14	378
5kg plastic container		112
20kg plastic container		36

CONSUMPTION

- 200gr / 50kg of cement in masonry mortars.
- 300gr / 50kg of cement in plasters.

FINOLIT

Liquid plasticizing admixture for mortars - replaces lime



DESCRIPTION

Liquid plasticizer that significantly improves the workability of cement mortars, fully replacing lime.

APPLICATIONS

Used for masonry mortars and base and final coat plasters, significantly improving workability and final strengths, for application by hand or pumping machine.

PACKAGING	ITEMS/BOX	ITEMS/PAL.
1kg plastic container	14	378
5kg plastic container		112
20kg plastic container		36

CONSUMPTION

- 100gr / 50kg of cement in masonry mortars.
- 150gr / 50kg of cement in plasters.

AD•PROOF

Waterproofing admixture for mortars & concrete



DESCRIPTION

Liquid admixture for concrete and mortars that significantly reduces water absorption, making them resistant to stress from water and thus increasing the life of the constructions.

It is produced and controlled according to European specification EN 934-2:2001 table 9.

APPLICATIONS

It is used in high strength concrete and fair-faced concrete applications.

It is also suitable in cases of concrete that is permanently stressed by water, such as foundations, basements, tanks, tunnels, septic tanks, swimming pools, etc.

PACKAGING

5kg plastic container

112

20kg plastic container

36

CONSUMPTION

Approximately 0.5% of the cement weight.

AD•SPL/A•G

High performance concrete superplasticizer type A-G



DESCRIPTION

Ready-to-use aqueous solution of synthetic polymers, with a broad range of applications.

Meets specifications: ASTM C 494-90 type A & G, ASTM C 1017-90 type 2, ΣK 308 type A & G, EAOT EN 934-2 Table 11.1, 11.2.

APPLICATIONS

Used widely in every concreting project.

It can be added at the construction site in the barrel track or in the mixer during concrete production.

Acts as a plasticizer at a small dosage and as superplasticizer at a large dosage.

PACKAGING

20kg plastic container

36

250kg barrel

CONSUMPTION

- Approx. 0.2-0.6% b.w. of cement for use as plasticizer.
- Approx. 0.6-1.2% b.w. of cement for use as superplasticizer.

AD•SPL/F

Concrete superplasticizer type F



DESCRIPTION

Ready-to-use aqueous solution of synthetic polymers, with a high rheoplastic performance.

Meets specifications: ASTM C 494-90 type F, ASTM C 1017-90 type 1, ΣK 308 type F.

APPLICATIONS

Used as a superplasticizer admixture for concrete when high strength concrete is required (e.g. C 20/25, C 25/30, etc.) or self-compacting concrete, for example in slabs, foundations, bridges, roofs, walls, columns, prestressed concrete elements, waterproof constructions, fair-faced concrete, foundation piles, liquid GUNITE, etc.

PACKAGING

20kg plastic container

36

250kg barrel

CONSUMPTION

Approximately 0.4-0.7kg / 100kg of cement.

cleaners



- **Fresh**
for domestic use
- **ProClean**
for professional use



Fresh (for domestic use)



F10

General purpose cleaner



DESCRIPTION

Powerful general purpose cleaner with special balanced formula, ideal for cleaning your home or workplace, suitable for every surface like floors, stainless steel countertops, tables, etc., without rinsing. It also contains anti-marks additives.

APPLICATIONS

Ideal for surfaces such as ceramic tiles, granites, sanitary utensils, countertops, etc. It has a strong cleaning action against fat, tartar, salt, wine, coffee, oil, etc., without affecting sensitive surfaces thanks to its neutral pH, while leaving a long lasting scent of freshness.

PACKAGING	ITEMS/BOX	ITEMS/PAL.
750ml trigger sprayer	16	432
1lt plastic container	14	378
5lt plastic container		112
20lt plastic container		36

CONSUMPTION

Approximately 1lt / 12-15m².

F20

Anti-mould cleaner



DESCRIPTION

Powerful cleaner dedicated against mould. The special formula eliminates fungi, moss and algae, while consolidating surfaces (internal and external).

APPLICATIONS

Ideal for areas with intense humidity (bathrooms, kitchens, storage rooms, cellars, etc.) and surfaces on which water vapor condenses (bathtubs, showers, sinks and ceilings without insulation). In addition, it is suitable for cleaning fences and sidewalks that have mould, algae, moss and soot.

PACKAGING	ITEMS/BOX	ITEMS/PAL.
750ml trigger sprayer	16	432
1lt plastic container	14	378
5lt plastic container		112
20lt plastic container		36

CONSUMPTION

Approximately 1lt / 12-15m².

F30

Salt cleaner



DESCRIPTION

Mild descaler based on citric acid. The special formula combines excellent cleaning performance while it inhibits the deposition of calcium salts.

APPLICATIONS

Ideal daily washroom cleaner, especially in hard water areas. Suitable for removing salt, rust, cement residues, etc. from delicate surfaces such as taps, chrome and stainless steel fixtures, copper, brass, aluminum, ceramic, etc., without the risk of corrosion. Cleans without scratching and leaves a pleasant long-lasting scent.

PACKAGING	ITEMS/BOX	ITEMS/PAL.
750ml trigger sprayer	16	432
1lt plastic container	14	378
5lt plastic container		112
20lt plastic container		36

CONSUMPTION

Approximately 1lt / 12-15m².



P10

Acidic tile grout cleaner



DESCRIPTION

Powerful cleaner for tile grouts and cementitious residues in general. The special formula quickly dissolves and removes residues of tile grouts, tile adhesives, plasters and other cementitious materials.

APPLICATIONS

Used for cleaning cementitious residues from ceramic tiles and tools, biofouling from submerged parts of ships, salt and rust depositions from cooling circuits, heat exchangers, closed circuits with water, etc. Thanks to the presence of corrosion inhibitors, it is applicable in every situation (except from aluminum alloys).

PACKAGING	ITEMS/BOX	ITEMS/PAL.
1lt plastic container	14	378
5lt plastic container		112
20lt plastic container		36

CONSUMPTION

Approximately 1lt / 15-20m².

P20

Natural stone cleaner



DESCRIPTION

Mild acidic cleaner for natural stones, mosaics and unpolished marbles. The special formula cleans deeply stains of rust, soil, oil, coffee and cementitious residues, restoring the initial vibrancy in the colours of natural stones.

APPLICATIONS

Used for cleaning walls and floors clad with natural stones, marbles and mosaics, before applying impregnating sealers or other protective varnishes. Additionally, for restoring surfaces and removing stains that have been created over time.

PACKAGING	ITEMS/BOX	ITEMS/PAL.
1lt plastic container	14	378
5lt plastic container		112
20lt plastic container		36

CONSUMPTION

Approximately 1lt / 4-5m².

P30

Marble & granite cleaner



DESCRIPTION

Powerful cleaner of polished marbles and natural stones. It doesn't harm the shine of the marbles as it is not acidic, while it penetrates deeply breaking down stains and restoring the initial vibrancy in the colours of the natural stones. Biodegradable by more than 90%.

APPLICATIONS

Used for cleaning stains of coffee, wine, oil, soot, nicotine, ink, etc. from marble, natural stone and granite surfaces. The special formula doesn't contain acids thus it is not harmful for the surfaces.

PACKAGING	ITEMS/BOX	ITEMS/PAL.
1lt plastic container	14	378
5lt plastic container		112
20lt plastic container		36

CONSUMPTION

Approximately 1lt / 12-15m².

P40

Graffiti remover



DESCRIPTION

Powerful graffiti remover. It is specially designed to remove rapidly any kind of paint or varnish (even epoxy-based) from any surface such as walls, marbles, concrete, metals, ceramic tiles, etc.

APPLICATIONS

Suitable for almost any surface. It is used for cleaning graffiti from buildings, monuments, etc., removing gel-coat during maintenance of boats, for renovating old wooden furniture, as well as at car paint and body repair shops, machine shops, etc.

PACKAGING	ITEMS/BOX	ITEMS/PAL.
1lt plastic container	14	378
5lt plastic container		112
20lt plastic container		36

CONSUMPTION

Approximately 1lt / 4-5m².

P50

Powerful industrial cleaner



DESCRIPTION

Powerful, concentrated cleaner for industrial areas and heavy machinery. Biodegradable by more than 90%.

APPLICATIONS

Used for cleaning fat, grease, oil and soil residues from surfaces such as concrete, ceramic tiles, epoxy floors, metallic surfaces, etc. It also removes tar and asphalt residues from trucks, machinery and tanks, it efficiently cleans earthmoving machinery, while it can also be used for car washing.

PACKAGING	ITEMS/BOX	ITEMS/PAL.
1lt plastic container	14	378
5lt plastic container		112
20lt plastic container		36

CONSUMPTION

Approximately 1lt / 5-6m².

P60

Powerful concentrated acidic cleaner



DESCRIPTION

Concentrated mixture of powerful acids and corrosion inhibitors, ideal for eliminating rust, limescale, any kind of oxidation, etc. The presence of corrosion inhibitors in its formula, allows to be used in every situation, except from aluminum alloys. After application rinse with plenty of water. No neutralization is needed.

APPLICATIONS

Used in serpentine with electrical resistance as it doesn't generate electrostatic charges and there's no fear for a short circuit. In the thermo hydraulic sector it is used for heating installations, cooling towers, heat exchangers, cooling circuits, etc. In the building sector it cleans cement residues on barrel-trucks, pumps, ceramic tiles, etc. In naval sector against the biofouling from the submerged part of the ships. In the plastics industry for cleaning the stainless steel molds. Also used in the glass industry, marble, granite and ceramics industry.

PACKAGING	ITEMS/BOX	ITEMS/PAL.
1lt plastic container	14	378
5lt plastic container		112
20lt plastic container		36

CONSUMPTION

Approximately 1lt / 12-15m².



CERTIFICATE

Certificate no. 14307



HEAD OFFICE
16 PITHAGORA Str,
731 34 CHANIA, CRETE, GREECE

QS Zürich AG certifies that the management system of the above mentioned company has been assessed and meets the requirements established by the following rules:

ISO 9001: 2015

The management system includes:

**PRODUCTION & DISTRIBUTION OF READY MIXED
CONCRETE & ASPHALT MIX. DESIGN, PRODUCTION &
DISTRIBUTION OF READY MIXED DRY MORTARS.
PROCESSING & DISTRIBUTION OF MARBLE,
NATURAL STONE & GRANITE PRODUCTS.**

During the period of validity of this certificate, the management system of the company must always comply with the requirements of the certified standards.

For updated amendments within the scope of the certification of the present certificate please refer to <http://www.quality-service.ch/>



Audit Date: 05.01.2018
Date of issue: 10.01.2018
Expiration date: 09.01.2021
Subject to successful surveillance audit

QS Zürich AG
P.O. Box 6335
CH-8050 Zürich
info@quality-service.ch




Management

- Products should be used by qualified technicians only.
- Users of **FINOMIX** products should consult the products' properties at all time.
- Recommendations on the application and intended use of the **FINOMIX** range are based on the company's expertise provided that the products are stored, used and applied according to the company's recommendation under normal conditions.
- The displayed consumptions are the result of measurements performed under real conditions, however they should be treated as indicative only.
- Rendering of colours in the charts is only indicative.



One step forward





FINOBETON S.A. Head Office

16 Pithagora Str., 73134 Chania, Crete, Greece
tel. +3028210 27000, fax +3028210 27005

Dry Mortars Production Plant

Chordaki, Chania, Greece, tel. +3028210 63050

Herakleion Distribution Center

150 Irinis & Filias Ave.
Malades Industrial Park, Herakleion, Greece
tel. +302810 545580, fax +302810 545581

Athens Distribution Center

40, 28th Oktovriou Str.
18233 Ag. I. Rentis, Athens, Greece
tel. +30210 4915140, fax +30210 4915141

info@finomix.gr

